



ELECTRONIC COPY

LG789602455
Report verification at igi.org



April 7, 2026

IGI Report Number **LG789602455**

Description **LABORATORY GROWN DIAMOND**

Shape and Cutting Style **ROUND BRILLIANT**

Measurements **8.25 - 8.31 X 4.94 MM**

GRADING RESULTS

Carat Weight **2.06 CARATS**

Color Grade **E**

Clarity Grade **VVS 2**

Cut Grade **IDEAL**

April 7, 2026

IGI Report Number **LG789602455**

Description **LABORATORY GROWN DIAMOND**

Shape and Cutting Style **ROUND BRILLIANT**

Measurements **8.25 - 8.31 X 4.94 MM**

GRADING RESULTS

Carat Weight **2.06 CARATS**

Color Grade **E**

Clarity Grade **VVS 2**

Cut Grade **IDEAL**

ADDITIONAL GRADING INFORMATION

Polish **EXCELLENT**

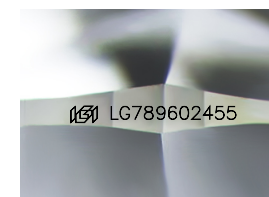
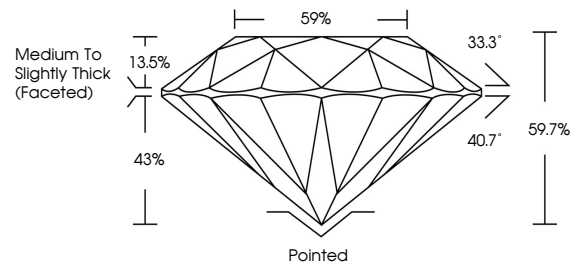
Symmetry **EXCELLENT**

Fluorescence **NONE**

Inscription(s) **IGI LG789602455**

Comments: This Laboratory Grown Diamond was created by Chemical Vapor Deposition (CVD) growth process. Type IIa

PROPORTIONS



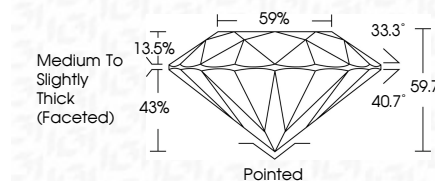
Sample Image Used

COLOR

D E F G H I J Faint Very Light Light

CLARITY

| FL | IF | VVS ¹⁻² | VS ¹⁻² | SI ¹⁻² | I ¹⁻³ |
|----------|---------------------|-----------------------------|------------------------|-------------------|------------------|
| Flawless | Internally Flawless | Very Very Slightly Included | Very Slightly Included | Slightly Included | Included |



ADDITIONAL GRADING INFORMATION

Polish **EXCELLENT**

Symmetry **EXCELLENT**

Fluorescence **NONE**

Inscription(s) **IGI LG789602455**

Comments: This Laboratory Grown Diamond was created by Chemical Vapor Deposition (CVD) growth process. Type IIa



IGI



| | | | | | | | | |
|-----------------|---------------------------|---------------|------------------------------------|----------------|-----------------|-----------------|-----------------|-----------------|
| April 7, 2026 | IGI Report No LG789602455 | 2.06 CARATS | E | Pointed | EXCELLENT | EXCELLENT | NONE | IGI LG789602455 |
| ROUND BRILLIANT | 8.25 - 8.31 X 4.94 MM | Carat Weight | VVS 2 | Polish | EXCELLENT | EXCELLENT | NONE | IGI LG789602455 |
| | | Color Grade | IDEAL | Symmetry | EXCELLENT | EXCELLENT | NONE | IGI LG789602455 |
| | | Clarity Grade | VVS 2 | Fluorescence | NONE | NONE | NONE | IGI LG789602455 |
| | | Cut Grade | IDEAL | Inscription(s) | IGI LG789602455 | IGI LG789602455 | IGI LG789602455 | IGI LG789602455 |
| | | Depth | 59.7% | | | | | |
| | | Table | 13.5% | | | | | |
| | | Girdle | 43% | | | | | |
| | | | Medium To Slightly Thick (Faceted) | | | | | |

Comments: This Laboratory Grown Diamond was created by Chemical Vapor Deposition (CVD) growth process. Type IIa