



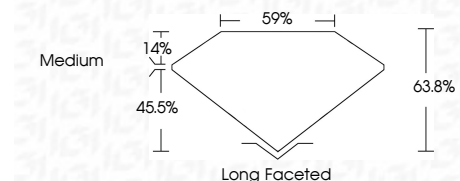
ELECTRONIC COPY

LG789604503
Report verification at igi.org



April 15, 2026
IGI Report Number **LG789604503**
Description **LABORATORY GROWN DIAMOND**
Shape and Cutting Style **MODIFIED EMERALD CUT**
Measurements **15.62 X 10.97 X 7.00 MM**

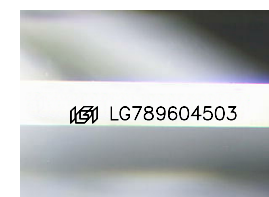
GRADING RESULTS
Carat Weight **12.06 CARATS**
Color Grade **F**
Clarity Grade **VVS 2**



ADDITIONAL GRADING INFORMATION
Polish **EXCELLENT**
Symmetry **EXCELLENT**
Fluorescence **NONE**
Inscription(s) **IGI LG789604503**
Comments: This Laboratory Grown Diamond was created by Chemical Vapor Deposition (CVD) growth process. Type IIa

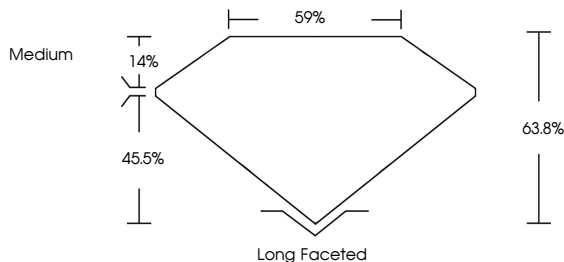


April 15, 2026
IGI Report No **LG789604503**
MODIFIED EMERALD CUT
15.62 X 10.97 X 7.00 MM
12.06 CARATS
Color Grade **F**
Clarity Grade **VVS 2**
Depth **45.5%**
Table **14%**
Girdle **Medium**
Culet **Long Faceted**
Polish **EXCELLENT**
Symmetry **EXCELLENT**
Fluorescence **NONE**
Inscription(s) **IGI LG789604503**
Comments: This Laboratory Grown Diamond was created by Chemical Vapor Deposition (CVD) growth process. Type IIa

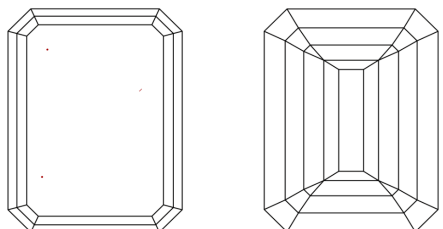


Sample Image Used

PROPORTIONS



CLARITY CHARACTERISTICS



KEY TO SYMBOLS
Red symbols indicate internal characteristics.
Green symbols indicate external characteristics.

COLOR

D	E	F	G	H	I	J	Faint	Very Light	Light
---	---	---	---	---	---	---	-------	------------	-------

CLARITY

FL	IF	VVS ¹⁻²	VS ¹⁻²	SI ¹⁻²	I ¹⁻³
Flawless	Internally Flawless	Very Very Slightly Included	Very Slightly Included	Slightly Included	Included

