



**ELECTRONIC COPY**

LG789605410  
Report verification at igi.org



April 8, 2026

IGI Report Number **LG789605410**

Description **LABORATORY GROWN DIAMOND**

Shape and Cutting Style **PRINCESS CUT**

Measurements **6.37 X 6.26 X 4.51 MM**

**GRADING RESULTS**

Carat Weight **1.54 CARAT**

Color Grade **F**

Clarity Grade **VVS 2**

April 8, 2026  
IGI Report Number **LG789605410**  
Description **LABORATORY GROWN DIAMOND**  
Shape and Cutting Style **PRINCESS CUT**  
Measurements **6.37 X 6.26 X 4.51 MM**

**GRADING RESULTS**

Carat Weight **1.54 CARAT**

Color Grade **F**

Clarity Grade **VVS 2**

**ADDITIONAL GRADING INFORMATION**

Polish **EXCELLENT**

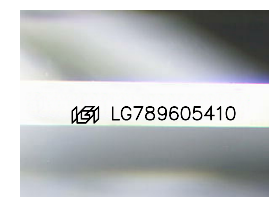
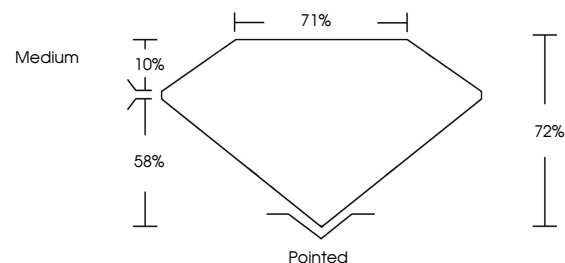
Symmetry **EXCELLENT**

Fluorescence **NONE**

Inscription(s) **IGI LG789605410**

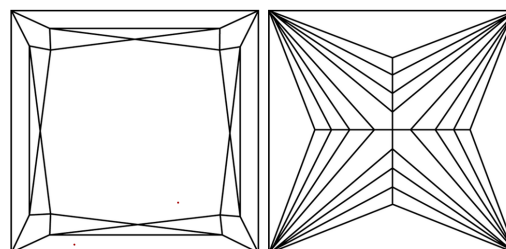
Comments: This Laboratory Grown Diamond was created by Chemical Vapor Deposition (CVD) growth process. Type IIa

**PROPORTIONS**



Sample Image Used

**CLARITY CHARACTERISTICS**



**KEY TO SYMBOLS**

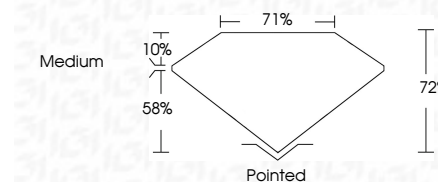
Red symbols indicate internal characteristics.  
Green symbols indicate external characteristics.

**COLOR**

D E F G H I J Faint Very Light Light

**CLARITY**

FL	IF	VVS <sup>1-2</sup>	VS <sup>1-2</sup>	SI <sup>1-2</sup>	I <sup>1-3</sup>
Flawless	Internally Flawless	Very Very Slightly Included	Very Slightly Included	Slightly Included	Included



**ADDITIONAL GRADING INFORMATION**

Polish **EXCELLENT**

Symmetry **EXCELLENT**

Fluorescence **NONE**

Inscription(s) **IGI LG789605410**

Comments: This Laboratory Grown Diamond was created by Chemical Vapor Deposition (CVD) growth process. Type IIa



April 8, 2026  
IGI Report No **LG789605410**  
**PRINCESS CUT**

**1.54 CARAT**  
F

**6.37 X 6.26 X 4.51 MM**  
VVS 2  
72%  
71%  
Medium

**Pointed**  
EXCELLENT  
EXCELLENT  
NONE  
IGI LG789605410

Comments: This Laboratory Grown Diamond was created by Chemical Vapor Deposition (CVD) growth process. Type IIa