



**ELECTRONIC COPY**

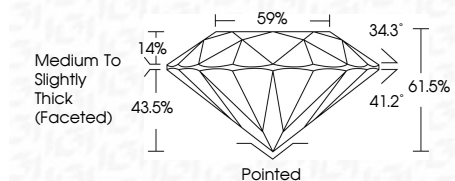
LG789608535  
Report verification at igi.org



April 6, 2026  
IGI Report Number **LG789608535**  
Description **LABORATORY GROWN DIAMOND**  
Shape and Cutting Style **ROUND BRILLIANT**  
Measurements **8.05 - 8.10 X 4.97 MM**

**GRADING RESULTS**

Carat Weight **2.01 CARATS**  
Color Grade **F**  
Clarity Grade **VVS 2**  
Cut Grade **IDEAL**



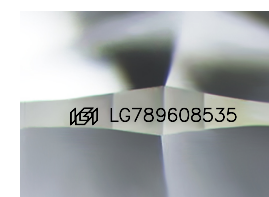
**ADDITIONAL GRADING INFORMATION**

Polish **EXCELLENT**  
Symmetry **EXCELLENT**  
Fluorescence **NONE**  
Inscription(s) **IGI LG789608535**  
Comments: This Laboratory Grown Diamond was created by Chemical Vapor Deposition (CVD) growth process. Type IIa



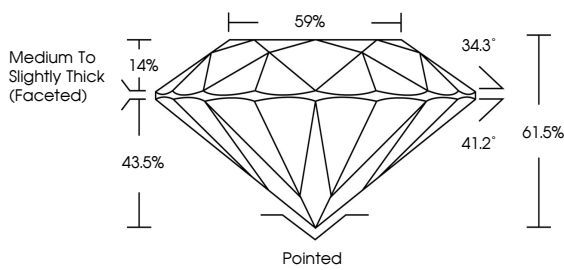
April 6, 2026	IGI Report No LG789608535	<b>2.01 CARATS</b>	<b>F</b>	<b>Pointed</b>
<b>ROUND BRILLIANT</b>	<b>8.05 - 8.10 X 4.97 MM</b>	Carat Weight	<b>VVS 2</b>	<b>EXCELLENT</b>
		Color Grade	<b>IDEAL</b>	<b>EXCELLENT</b>
		Clarity Grade	<b>61.5%</b>	<b>NONE</b>
		Depth	<b>59%</b>	<b>IGI LG789608535</b>
		Table	<b>Medium To Slightly Thick (Faceted)</b>	
		Grade		
		Culet		
		Polish		
		Symmetry		
		Fluorescence		
		Inscription(s)		

Comments: This Laboratory Grown Diamond was created by Chemical Vapor Deposition (CVD) growth process. Type IIa



Sample Image Used

**PROPORTIONS**



**COLOR**

D	E	F	G	H	I	J	Faint	Very Light	Light
---	---	---	---	---	---	---	-------	------------	-------

**CLARITY**

FL	IF	VVS <sup>1-2</sup>	VS <sup>1-2</sup>	SI <sup>1-2</sup>	I <sup>1-3</sup>
Flawless	Internally Flawless	Very Very Slightly Included	Very Slightly Included	Slightly Included	Included

