



**ELECTRONIC COPY**

LG789612405  
Report verification at igi.org



April 22, 2026

IGI Report Number **LG789612405**

Description **LABORATORY GROWN DIAMOND**

Shape and Cutting Style **CUT CORNERED  
RECTANGULAR MODIFIED  
BRILLIANT**

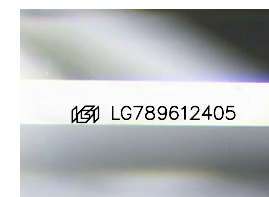
Measurements **8.25 X 5.65 X 3.81 MM**

**GRADING RESULTS**

Carat Weight **1.56 CARAT**

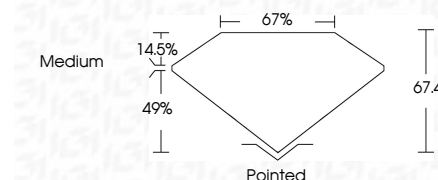
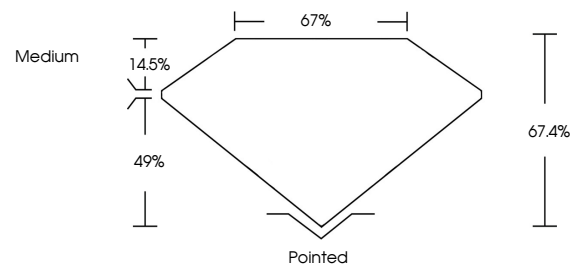
Color Grade **E**

Clarity Grade **VVS 2**



Sample Image Used

**PROPORTIONS**



April 22, 2026

IGI Report Number **LG789612405**

Description **LABORATORY GROWN DIAMOND**

Shape and Cutting Style **CUT CORNERED RECTANGULAR  
MODIFIED BRILLIANT**

Measurements **8.25 X 5.65 X 3.81 MM**

**GRADING RESULTS**

Carat Weight **1.56 CARAT**

Color Grade **E**

Clarity Grade **VVS 2**

**ADDITIONAL GRADING INFORMATION**

Polish **EXCELLENT**

Symmetry **EXCELLENT**

Fluorescence **NONE**

Inscription(s) **IGI LG789612405**

Comments: This Laboratory Grown Diamond was created by Chemical Vapor Deposition (CVD) growth process. Type IIa

**COLOR**

D E F G H I J Faint Very Light Light

**CLARITY**

FL	IF	VVS <sup>1-2</sup>	VS <sup>1-2</sup>	SI <sup>1-2</sup>	I <sup>1-3</sup>
Flawless	Internally Flawless	Very Very Slightly Included	Very Slightly Included	Slightly Included	Included

**ADDITIONAL GRADING INFORMATION**

Polish **EXCELLENT**

Symmetry **EXCELLENT**

Fluorescence **NONE**

Inscription(s) **IGI LG789612405**

Comments: This Laboratory Grown Diamond was created by Chemical Vapor Deposition (CVD) growth process. Type IIa



**IGI**



April 22, 2026  
IGI Report No LG789612405  
CUT CORNERED RECT. MODIFIED BRILLIANT  
8.25 X 5.65 X 3.81 MM  
Carat Weight 1.56 CARAT  
Color Grade E  
Clarity Grade VVS 2  
Depth 67.4%  
Table 67%  
Girdle Medium  
Culet Pointed  
Polish EXCELLENT  
Symmetry EXCELLENT  
Fluorescence NONE  
Inscription(s) IGI LG789612405  
Comments: This Laboratory Grown Diamond was created by Chemical Vapor Deposition (CVD) growth process. Type IIa