



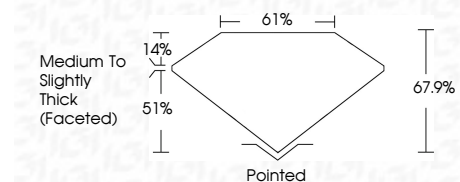
ELECTRONIC COPY

LG789613473
Report verification at igi.org



April 9, 2026
IGI Report Number **LG789613473**
Description **LABORATORY GROWN DIAMOND**
Shape and Cutting Style **CUSHION MODIFIED BRILLIANT**
Measurements **9.04 X 6.57 X 4.46 MM**

GRADING RESULTS
Carat Weight **2.09 CARATS**
Color Grade **D**
Clarity Grade **VVS 2**



ADDITIONAL GRADING INFORMATION
Polish **EXCELLENT**
Symmetry **EXCELLENT**
Fluorescence **NONE**
Inscription(s) **IGI LG789613473**
Comments: This Laboratory Grown Diamond was created by Chemical Vapor Deposition (CVD) growth process. Type IIa



April 9, 2026
IGI Report No LG789613473
CUSHION MODIFIED BRILLIANT
9.04 X 6.57 X 4.46 MM
2.09 CARATS
D
VVS 2
67.9%
61%
Medium to Slightly Thick (Faceted)
Pointed
EXCELLENT
EXCELLENT
NONE
IGI LG789613473
Comments: This Laboratory Grown Diamond was created by Chemical Vapor Deposition (CVD) growth process. Type IIa

LABORATORY GROWN DIAMOND REPORT

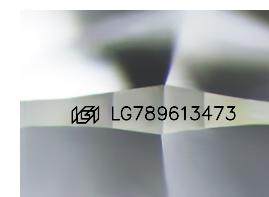
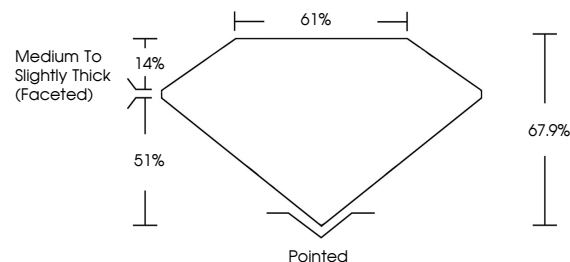
April 9, 2026
IGI Report Number **LG789613473**
Description **LABORATORY GROWN DIAMOND**
Shape and Cutting Style **CUSHION MODIFIED BRILLIANT**
Measurements **9.04 X 6.57 X 4.46 MM**

GRADING RESULTS
Carat Weight **2.09 CARATS**
Color Grade **D**
Clarity Grade **VVS 2**

ADDITIONAL GRADING INFORMATION
Polish **EXCELLENT**
Symmetry **EXCELLENT**
Fluorescence **NONE**
Inscription(s) **IGI LG789613473**

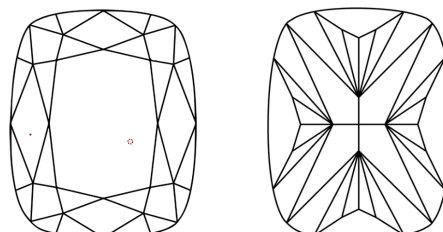
Comments: This Laboratory Grown Diamond was created by Chemical Vapor Deposition (CVD) growth process. Type IIa

PROPORTIONS



Sample Image Used

CLARITY CHARACTERISTICS



KEY TO SYMBOLS

Red symbols indicate internal characteristics.
Green symbols indicate external characteristics.

COLOR

D E F G H I J Faint Very Light Light

CLARITY

FL	IF	VS ¹⁻²	VS ¹⁻²	SI ¹⁻²	I ¹⁻³
Flawless	Internally Flawless	Very Very Slightly Included	Very Slightly Included	Slightly Included	Included

