



ELECTRONIC COPY

LG789618422
Report verification at igi.org



April 10, 2026
IGI Report Number **LG789618422**
Description **LABORATORY GROWN DIAMOND**
Shape and Cutting Style **CUT CORNERED RECTANGULAR MODIFIED BRILLIANT**
Measurements **7.14 X 4.81 X 3.38 MM**
GRADING RESULTS
Carat Weight **1.02 CARAT**
Color Grade **FANCY YELLOW**
Clarity Grade **VS 2**

LABORATORY GROWN DIAMOND REPORT

April 10, 2026
IGI Report Number **LG789618422**
Description **LABORATORY GROWN DIAMOND**
Shape and Cutting Style **CUT CORNERED RECTANGULAR MODIFIED BRILLIANT**
Measurements **7.14 X 4.81 X 3.38 MM**

GRADING RESULTS

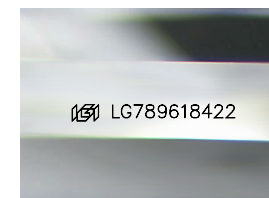
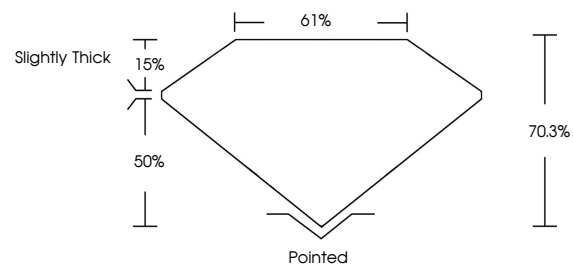
Carat Weight **1.02 CARAT**
Color Grade **FANCY YELLOW**
Clarity Grade **VS 2**

ADDITIONAL GRADING INFORMATION

Polish **EXCELLENT**
Symmetry **EXCELLENT**
Fluorescence **NONE**
Inscription(s) **IGI LG789618422**

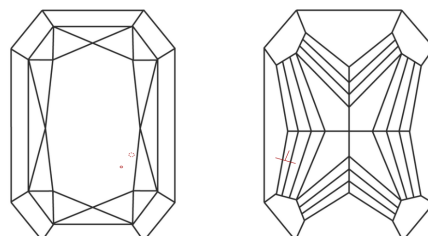
Comments: This Laboratory Grown Diamond was created by Chemical Vapor Deposition (CVD) growth process.
Indications of post-growth treatment.

PROPORTIONS



Sample Image Used

CLARITY CHARACTERISTICS



KEY TO SYMBOLS

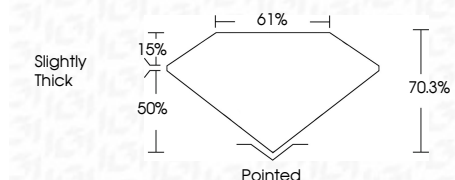
Red symbols indicate internal characteristics.
Green symbols indicate external characteristics.

COLOR

D E F G H I J Faint Very Light Light

CLARITY

FL IF VS¹⁻² VS¹⁻² SI¹⁻² I¹⁻³
Flawless Internally Flawless Very Very Slightly Included Very Slightly Included Slightly Included Included



ADDITIONAL GRADING INFORMATION

Polish **EXCELLENT**
Symmetry **EXCELLENT**
Fluorescence **NONE**
Inscription(s) **IGI LG789618422**
Comments: This Laboratory Grown Diamond was created by Chemical Vapor Deposition (CVD) growth process.
Indications of post-growth treatment.



April 10, 2026
IGI Report No **LG789618422**
CUT CORNERED RECT. MODIFIED BRILLIANT
7.14 X 4.81 X 3.38 MM
Carat Weight **1.02 CARAT**
Color Grade **FANCY YELLOW**
Clarity Grade **VS 2**
Depth **70.3%**
Table **61%**
Girdle **Slightly Thick**
Culet **Pointed**
Polish **EXCELLENT**
Symmetry **EXCELLENT**
Fluorescence **NONE**
Inscription(s) **IGI LG789618422**

Comments: This Laboratory Grown Diamond was created by Chemical Vapor Deposition (CVD) growth process.
Indications of post-growth treatment.