



ELECTRONIC COPY

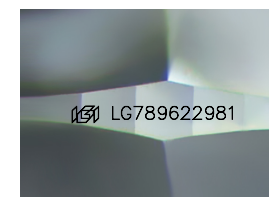
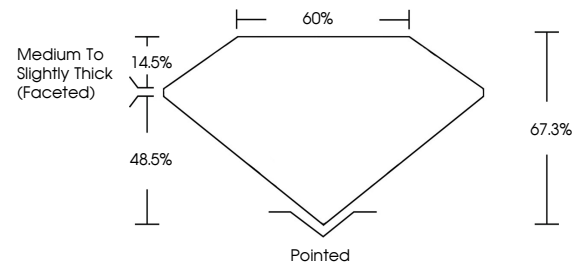
LG789622981
Report verification at igi.org



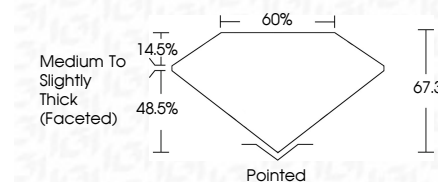
April 6, 2026
IGI Report Number **LG789622981**
Description **LABORATORY GROWN DIAMOND**
Shape and Cutting Style **CUSHION MODIFIED BRILLIANT**
Measurements **9.85 X 7.74 X 5.21 MM**
GRADING RESULTS
Carat Weight **3.12 CARATS**
Color Grade **F**
Clarity Grade **VVS 1**

April 6, 2026
IGI Report Number **LG789622981**
Description **LABORATORY GROWN DIAMOND**
Shape and Cutting Style **CUSHION MODIFIED BRILLIANT**
Measurements **9.85 X 7.74 X 5.21 MM**
GRADING RESULTS
Carat Weight **3.12 CARATS**
Color Grade **F**
Clarity Grade **VVS 1**

PROPORTIONS



Sample Image Used



ADDITIONAL GRADING INFORMATION

Polish **EXCELLENT**
Symmetry **EXCELLENT**
Fluorescence **NONE**
Inscription(s) **IGI LG789622981**

Comments: This Laboratory Grown Diamond was created by Chemical Vapor Deposition (CVD) growth process. Type IIa

ADDITIONAL GRADING INFORMATION

Polish **EXCELLENT**
Symmetry **EXCELLENT**
Fluorescence **NONE**
Inscription(s) **IGI LG789622981**
Comments: This Laboratory Grown Diamond was created by Chemical Vapor Deposition (CVD) growth process. Type IIa

COLOR

D E F G H I J Faint Very Light Light

CLARITY

FL	IF	VVS ¹⁻²	VS ¹⁻²	SI ¹⁻²	I ¹⁻³
Flawless	Internally Flawless	Very Very Slightly Included	Very Slightly Included	Slightly Included	Included



IGI



April 6, 2026
IGI Report No **LG789622981**
CUSHION MODIFIED BRILLIANT
9.85 X 7.74 X 5.21 MM
3.12 CARATS
F
VVS 1
67.0%
60%
Medium to Slightly Thick (Faceted)
Pointed
EXCELLENT
EXCELLENT
NONE
IGI LG789622981

Comments: This Laboratory Grown Diamond was created by Chemical Vapor Deposition (CVD) growth process. Type IIa