



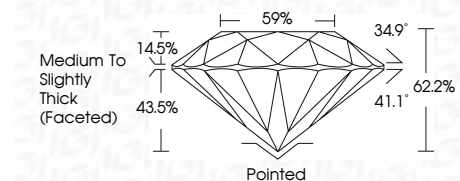
ELECTRONIC COPY

LG789623974 Report verification at igi.org



April 8, 2026 IGI Report Number LG789623974 Description LABORATORY GROWN DIAMOND Shape and Cutting Style ROUND BRILLIANT Measurements 6.49 - 6.52 X 4.05 MM

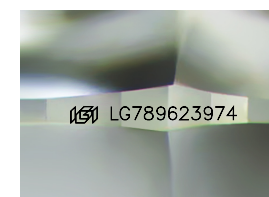
GRADING RESULTS Carat Weight 1.06 CARAT Color Grade G Clarity Grade VS 1 Cut Grade EXCELLENT



ADDITIONAL GRADING INFORMATION Polish EXCELLENT Symmetry EXCELLENT Fluorescence NONE Inscription(s) LG789623974 Comments: This Laboratory Grown Diamond was created by Chemical Vapor Deposition (CVD) growth process. Type IIa

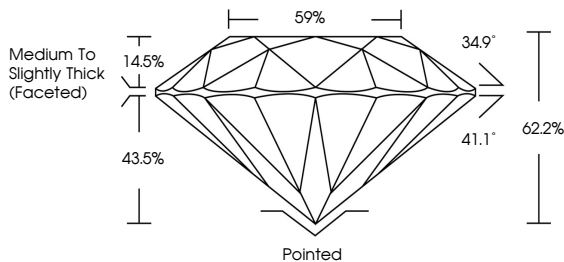


April 8, 2026 IGI Report No LG789623974 ROUND BRILLIANT 6.49 - 6.52 X 4.05 MM 1.06 CARAT G VS 1 EXCELLENT 62.2% 59% Medium To Slightly Thick (Faceted) Pointed EXCELLENT EXCELLENT NONE LG789623974

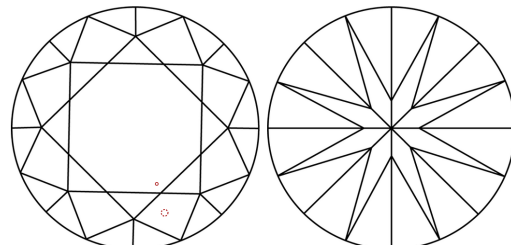


Sample Image Used

PROPORTIONS



CLARITY CHARACTERISTICS



KEY TO SYMBOLS Red symbols indicate internal characteristics. Green symbols indicate external characteristics.

COLOR

Color scale table with categories D, E, F, G, H, I, J, Faint, Very Light, Light

CLARITY

Clarity scale table with categories FL, IF, VS 1-2, VS 1-2, SI 1-2, I 1-3, Flawless, Internally Flawless, Very Very Slightly Included, Very Slightly Included, Slightly Included, Included



April 8, 2026 IGI Report Number LG789623974 Description LABORATORY GROWN DIAMOND Shape and Cutting Style ROUND BRILLIANT Measurements 6.49 - 6.52 X 4.05 MM

GRADING RESULTS Carat Weight 1.06 CARAT Color Grade G Clarity Grade VS 1 Cut Grade EXCELLENT

ADDITIONAL GRADING INFORMATION Polish EXCELLENT Symmetry EXCELLENT Fluorescence NONE Inscription(s) LG789623974

Comments: This Laboratory Grown Diamond was created by Chemical Vapor Deposition (CVD) growth process. Type IIa

