



**ELECTRONIC COPY**

LG789627016  
Report verification at igi.org



April 9, 2026  
IGI Report Number **LG789627016**  
Description **LABORATORY GROWN DIAMOND**  
Shape and Cutting Style **CUSHION MODIFIED BRILLIANT**  
Measurements **9.14 X 6.58 X 4.39 MM**  
**GRADING RESULTS**  
Carat Weight **2.09 CARATS**  
Color Grade **E**  
Clarity Grade **VVS 2**

April 9, 2026  
IGI Report Number **LG789627016**  
Description **LABORATORY GROWN DIAMOND**  
Shape and Cutting Style **CUSHION MODIFIED BRILLIANT**  
Measurements **9.14 X 6.58 X 4.39 MM**

**GRADING RESULTS**

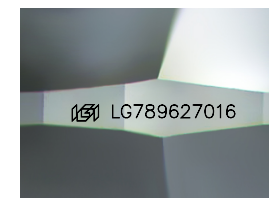
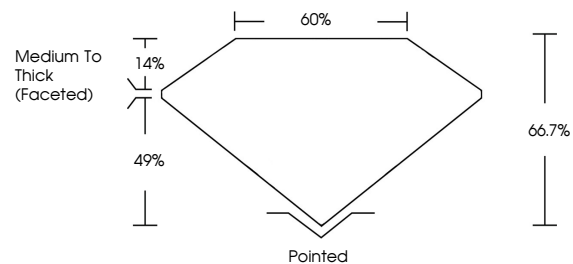
Carat Weight **2.09 CARATS**  
Color Grade **E**  
Clarity Grade **VVS 2**

**ADDITIONAL GRADING INFORMATION**

Polish **EXCELLENT**  
Symmetry **EXCELLENT**  
Fluorescence **NONE**  
Inscription(s) **IGI LG789627016**

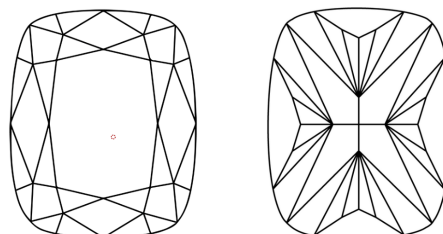
Comments: This Laboratory Grown Diamond was created by Chemical Vapor Deposition (CVD) growth process.  
Type IIa

**PROPORTIONS**



Sample Image Used

**CLARITY CHARACTERISTICS**



**KEY TO SYMBOLS**

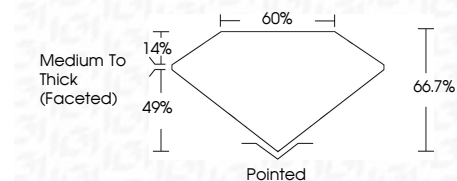
Red symbols indicate internal characteristics.  
Green symbols indicate external characteristics.

**COLOR**

D E F G H I J Faint Very Light Light

**CLARITY**

FL	IF	VVS <sup>1-2</sup>	VS <sup>1-2</sup>	SI <sup>1-2</sup>	I <sup>1-3</sup>
Flawless	Internally Flawless	Very Very Slightly Included	Very Slightly Included	Slightly Included	Included



**ADDITIONAL GRADING INFORMATION**

Polish **EXCELLENT**  
Symmetry **EXCELLENT**  
Fluorescence **NONE**  
Inscription(s) **IGI LG789627016**  
Comments: This Laboratory Grown Diamond was created by Chemical Vapor Deposition (CVD) growth process.  
Type IIa



**IGI**



April 9, 2026  
IGI Report No **LG789627016**  
**CUSHION MODIFIED BRILLIANT**  
9.14 X 6.58 X 4.39 MM  
2.09 CARATS  
E  
VVS 2  
66.7%  
49%  
Medium To Thick (Faceted)  
Pointed  
EXCELLENT  
EXCELLENT  
NONE  
IGI LG789627016  
Comments: This Laboratory Grown Diamond was created by Chemical Vapor Deposition (CVD) growth process.  
Type IIa