



ELECTRONIC COPY

LG789629476
Report verification at igi.org



April 8, 2026

IGI Report Number **LG789629476**

Description **LABORATORY GROWN DIAMOND**

Shape and Cutting Style **ROUND BRILLIANT**

Measurements **7.11 - 7.14 X 4.47 MM**

GRADING RESULTS

Carat Weight **1.40 CARAT**

Color Grade **E**

Clarity Grade **VS 1**

Cut Grade **EXCELLENT**

April 8, 2026

IGI Report Number **LG789629476**

Description **LABORATORY GROWN DIAMOND**

Shape and Cutting Style **ROUND BRILLIANT**

Measurements **7.11 - 7.14 X 4.47 MM**

GRADING RESULTS

Carat Weight **1.40 CARAT**

Color Grade **E**

Clarity Grade **VS 1**

Cut Grade **EXCELLENT**

ADDITIONAL GRADING INFORMATION

Polish **EXCELLENT**

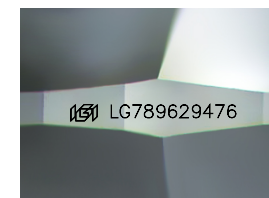
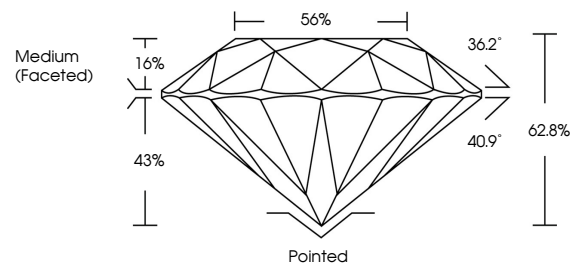
Symmetry **EXCELLENT**

Fluorescence **NONE**

Inscription(s) **IGI LG789629476**

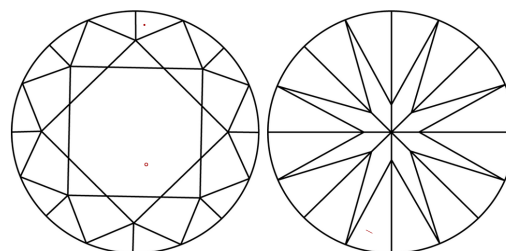
Comments: This Laboratory Grown Diamond was created by Chemical Vapor Deposition (CVD) growth process.
Type IIa

PROPORTIONS



Sample Image Used

CLARITY CHARACTERISTICS



KEY TO SYMBOLS

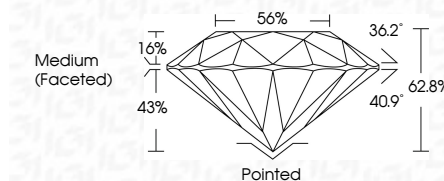
Red symbols indicate internal characteristics.
Green symbols indicate external characteristics.

COLOR

D E F G H I J Faint Very Light Light

CLARITY

FL	IF	VS ¹⁻²	VS ¹⁻²	SI ¹⁻²	I ¹⁻³
Flawless	Internally Flawless	Very Very Slightly Included	Very Slightly Included	Slightly Included	Included



ADDITIONAL GRADING INFORMATION

Polish **EXCELLENT**

Symmetry **EXCELLENT**

Fluorescence **NONE**

Inscription(s) **IGI LG789629476**

Comments: This Laboratory Grown Diamond was created by Chemical Vapor Deposition (CVD) growth process.
Type IIa



IGI



April 8, 2026	IGI Report No LG789629476	1.40 CARAT	E	VS 1	62.8%	56%	Medium (Faceted)	Pointed	EXCELLENT	EXCELLENT	NONE	IGI LG789629476
ROUND BRILLIANT	7.11 - 7.14 X 4.47 MM	Color Grade	EXCELLENT	Cut Grade	EXCELLENT	Depth	62.8%	Table	56%	Culet	None	Inscription(s)
		Carat Weight	1.40 CARAT	Color Grade	E	Clarity Grade	VS 1	Cut Grade	EXCELLENT	Polish	EXCELLENT	Comments: This Laboratory Grown Diamond was created by Chemical Vapor Deposition (CVD) growth process.
		Shape and Cutting Style	ROUND BRILLIANT	Measurements	7.11 - 7.14 X 4.47 MM	Fluorescence	NONE	Symmetry	EXCELLENT	Type IIa		