



ELECTRONIC COPY

LG789633036
Report verification at igi.org



April 7, 2026

IGI Report Number **LG789633036**

Description **LABORATORY GROWN DIAMOND**

Shape and Cutting Style **PEAR BRILLIANT**

Measurements **14.36 X 9.52 X 6.19 MM**

GRADING RESULTS

Carat Weight **5.09 CARATS**

Color Grade **E**

Clarity Grade **VVS 2**

April 7, 2026

IGI Report Number **LG789633036**

Description **LABORATORY GROWN DIAMOND**

Shape and Cutting Style **PEAR BRILLIANT**

Measurements **14.36 X 9.52 X 6.19 MM**

GRADING RESULTS

Carat Weight **5.09 CARATS**

Color Grade **E**

Clarity Grade **VVS 2**

ADDITIONAL GRADING INFORMATION

Polish **EXCELLENT**

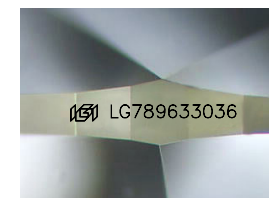
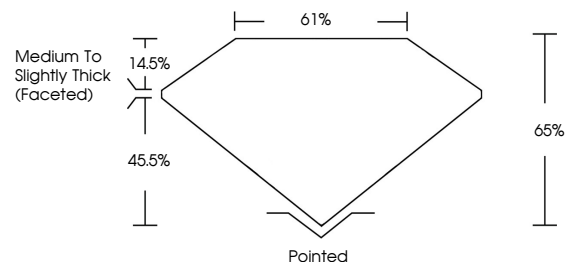
Symmetry **EXCELLENT**

Fluorescence **NONE**

Inscription(s) **IGI LG789633036**

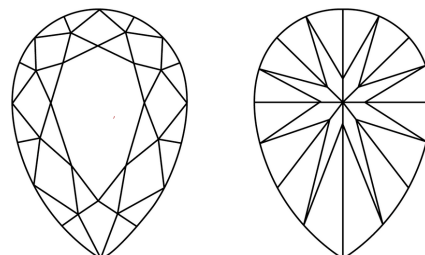
Comments: This Laboratory Grown Diamond was created by Chemical Vapor Deposition (CVD) growth process. Type IIa

PROPORTIONS



Sample Image Used

CLARITY CHARACTERISTICS



KEY TO SYMBOLS

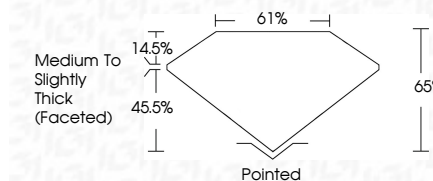
Red symbols indicate internal characteristics.
Green symbols indicate external characteristics.

COLOR

D E F G H I J Faint Very Light Light

CLARITY

FL	IF	VS ¹⁻²	VS ¹⁻²	SI ¹⁻²	I ¹⁻³
Flawless	Internally Flawless	Very Very Slightly Included	Very Slightly Included	Slightly Included	Included



ADDITIONAL GRADING INFORMATION

Polish **EXCELLENT**

Symmetry **EXCELLENT**

Fluorescence **NONE**

Inscription(s) **IGI LG789633036**

Comments: This Laboratory Grown Diamond was created by Chemical Vapor Deposition (CVD) growth process. Type IIa



IGI



April 7, 2026
IGI Report No LG789633036
PEAR BRILLIANT

5.09 CARATS
E

14.36 X 9.52 X 6.19 MM
Carat Weight

E
Color Grade

VVS 2
Clarity Grade

65%
61%
Medium to Slightly Thick (Faceted)
Table
Girdle

Pointed
Culet

EXCELLENT
EXCELLENT
NONE
Fluorescence
Symmetry
Polish

IGI LG789633036
Inscription(s)

Comments: This Laboratory Grown Diamond was created by Chemical Vapor Deposition (CVD) growth process. Type IIa