



**ELECTRONIC COPY**

LG789635215  
Report verification at igi.org



April 8, 2026  
IGI Report Number **LG789635215**  
Description **LABORATORY GROWN DIAMOND**  
Shape and Cutting Style **CUSHION MODIFIED BRILLIANT**  
Measurements **9.02 X 6.56 X 4.46 MM**  
**GRADING RESULTS**  
Carat Weight **2.10 CARATS**  
Color Grade **F**  
Clarity Grade **VS 1**

April 8, 2026  
IGI Report Number **LG789635215**  
Description **LABORATORY GROWN DIAMOND**  
Shape and Cutting Style **CUSHION MODIFIED BRILLIANT**  
Measurements **9.02 X 6.56 X 4.46 MM**

**GRADING RESULTS**

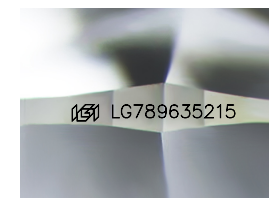
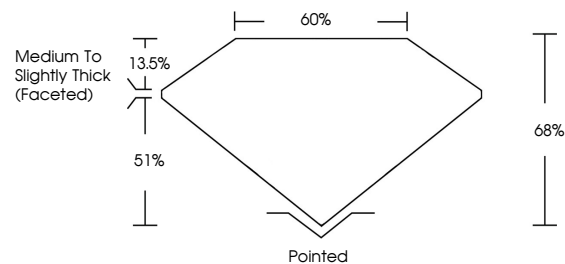
Carat Weight **2.10 CARATS**  
Color Grade **F**  
Clarity Grade **VS 1**

**ADDITIONAL GRADING INFORMATION**

Polish **EXCELLENT**  
Symmetry **EXCELLENT**  
Fluorescence **NONE**  
Inscription(s) **IGI LG789635215**

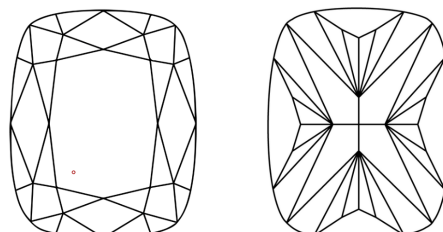
Comments: This Laboratory Grown Diamond was created by Chemical Vapor Deposition (CVD) growth process. Type IIa

**PROPORTIONS**



Sample Image Used

**CLARITY CHARACTERISTICS**



**KEY TO SYMBOLS**

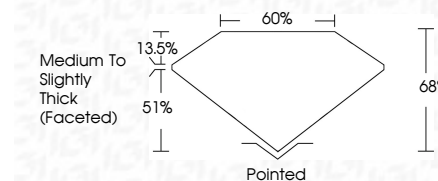
Red symbols indicate internal characteristics.  
Green symbols indicate external characteristics.

**COLOR**

D E F G H I J Faint Very Light Light

**CLARITY**

FL	IF	VS <sup>1-2</sup>	VS <sup>1-2</sup>	SI <sup>1-2</sup>	I <sup>1-3</sup>
Flawless	Internally Flawless	Very Very Slightly Included	Very Slightly Included	Slightly Included	Included



**ADDITIONAL GRADING INFORMATION**

Polish **EXCELLENT**  
Symmetry **EXCELLENT**  
Fluorescence **NONE**  
Inscription(s) **IGI LG789635215**  
Comments: This Laboratory Grown Diamond was created by Chemical Vapor Deposition (CVD) growth process. Type IIa



**IGI**



April 8, 2026  
IGI Report No **LG789635215**  
**CUSHION MODIFIED BRILLIANT**  
9.02 X 6.56 X 4.46 MM  
2.10 CARATS  
F  
VS 1  
68%  
65%  
Medium to Slightly Thick (Faceted)  
Pointed  
EXCELLENT  
EXCELLENT  
NONE  
IGI LG789635215  
Comments: This Laboratory Grown Diamond was created by Chemical Vapor Deposition (CVD) growth process. Type IIa