



ELECTRONIC COPY

LG789635336 Report verification at igi.org



April 11, 2026

IGI Report Number LG789635336

Description LABORATORY GROWN DIAMOND

Shape and Cutting Style ROUND BRILLIANT

Measurements 6.40 - 6.44 X 3.92 MM

GRADING RESULTS

Carat Weight 1.01 CARAT

Color Grade E

Clarity Grade VVS 2

Cut Grade EXCELLENT

April 11, 2026 IGI Report Number LG789635336 Description LABORATORY GROWN DIAMOND Shape and Cutting Style ROUND BRILLIANT Measurements 6.40 - 6.44 X 3.92 MM

GRADING RESULTS

Carat Weight 1.01 CARAT

Color Grade E

Clarity Grade VVS 2

Cut Grade EXCELLENT

ADDITIONAL GRADING INFORMATION

Polish EXCELLENT

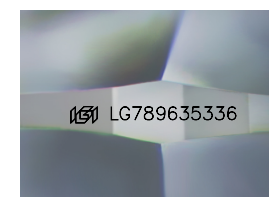
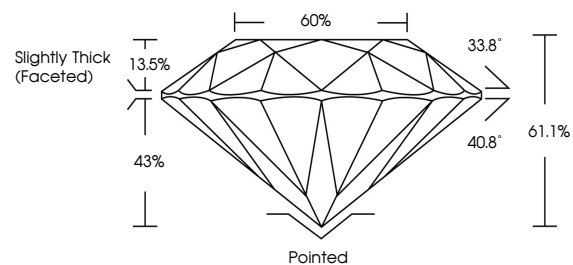
Symmetry EXCELLENT

Fluorescence NONE

Inscription(s) IGI LG789635336

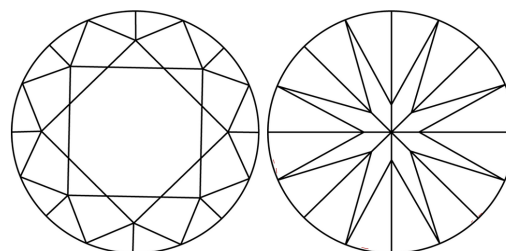
Comments: This Laboratory Grown Diamond was created by Chemical Vapor Deposition (CVD) growth process. Type IIa

PROPORTIONS



Sample Image Used

CLARITY CHARACTERISTICS



KEY TO SYMBOLS

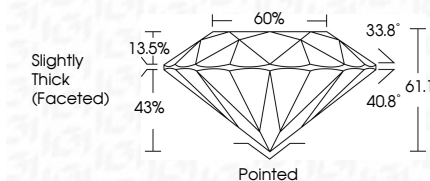
Red symbols indicate internal characteristics. Green symbols indicate external characteristics.

COLOR

D E F G H I J Faint Very Light Light

CLARITY

Table with columns for FL, IF, VVS 1-2, VS 1-2, SI 1-2, I 1-3 and corresponding descriptions: Flawless, Internally Flawless, Very Very Slightly Included, Very Slightly Included, Slightly Included, Included.



ADDITIONAL GRADING INFORMATION

Polish EXCELLENT

Symmetry EXCELLENT

Fluorescence NONE

Inscription(s) IGI LG789635336

Comments: This Laboratory Grown Diamond was created by Chemical Vapor Deposition (CVD) growth process. Type IIa



IGI



Summary of report details including date, report number, description, measurements, grading results (Carat Weight, Color Grade, Clarity Grade, Cut Grade), and additional grading information (Polish, Symmetry, Fluorescence, Inscription(s)).