



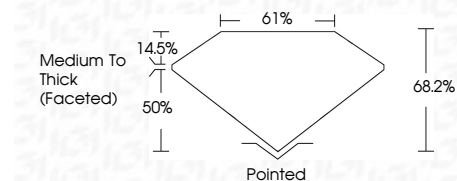
ELECTRONIC COPY

LG789636821
Report verification at igi.org



April 8, 2026
IGI Report Number **LG789636821**
Description **LABORATORY GROWN DIAMOND**
Shape and Cutting Style **CUSHION MODIFIED BRILLIANT**
Measurements **8.70 X 6.57 X 4.48 MM**

GRADING RESULTS
Carat Weight **2.08 CARATS**
Color Grade **F**
Clarity Grade **VVS 2**



ADDITIONAL GRADING INFORMATION
Polish **EXCELLENT**
Symmetry **EXCELLENT**
Fluorescence **NONE**
Inscription(s) **IGI LG789636821**
Comments: This Laboratory Grown Diamond was created by Chemical Vapor Deposition (CVD) growth process. Type IIa



April 8, 2026
IGI Report No LG789636821
CUSHION MODIFIED BRILLIANT
8.70 X 6.57 X 4.48 MM
2.08 CARATS
F
VVS 2
68.2%
50%
61%
Medium To Thick (Faceted)
Pointed
EXCELLENT
EXCELLENT
NONE
IGI LG789636821
Comments: This Laboratory Grown Diamond was created by Chemical Vapor Deposition (CVD) growth process. Type IIa

LABORATORY GROWN DIAMOND REPORT

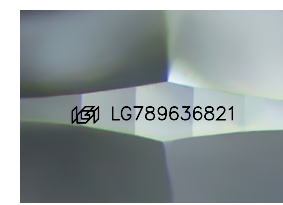
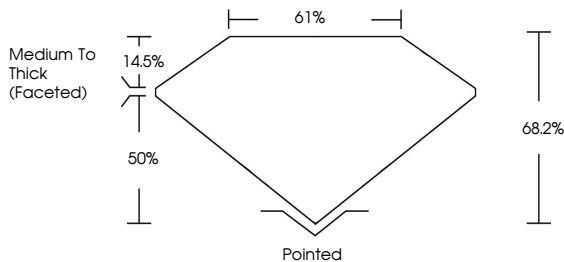
April 8, 2026
IGI Report Number **LG789636821**
Description **LABORATORY GROWN DIAMOND**
Shape and Cutting Style **CUSHION MODIFIED BRILLIANT**
Measurements **8.70 X 6.57 X 4.48 MM**

GRADING RESULTS
Carat Weight **2.08 CARATS**
Color Grade **F**
Clarity Grade **VVS 2**

ADDITIONAL GRADING INFORMATION
Polish **EXCELLENT**
Symmetry **EXCELLENT**
Fluorescence **NONE**
Inscription(s) **IGI LG789636821**

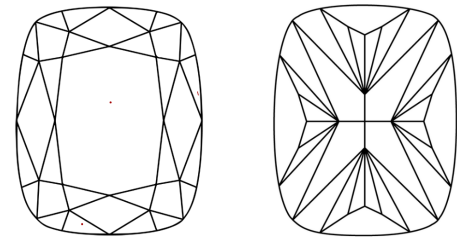
Comments: This Laboratory Grown Diamond was created by Chemical Vapor Deposition (CVD) growth process. Type IIa

PROPORTIONS



Sample Image Used

CLARITY CHARACTERISTICS



KEY TO SYMBOLS
Red symbols indicate internal characteristics.
Green symbols indicate external characteristics.

COLOR

| | | | | | | | | | |
|---|---|---|---|---|---|---|-------|------------|-------|
| D | E | F | G | H | I | J | Faint | Very Light | Light |
|---|---|---|---|---|---|---|-------|------------|-------|

CLARITY

| | | | | | |
|----------|---------------------|-----------------------------|------------------------|-------------------|------------------|
| FL | IF | VVS ¹⁻² | VS ¹⁻² | SI ¹⁻² | I ¹⁻³ |
| Flawless | Internally Flawless | Very Very Slightly Included | Very Slightly Included | Slightly Included | Included |

