



ELECTRONIC COPY

LG789638596
Report verification at igi.org



April 13, 2026

IGI Report Number **LG789638596**

Description **LABORATORY GROWN DIAMOND**

Shape and Cutting Style **ROUND BRILLIANT**

Measurements **6.52 - 6.55 X 4.05 MM**

GRADING RESULTS

Carat Weight **1.07 CARAT**

Color Grade **D**

Clarity Grade **VS 1**

Cut Grade **IDEAL**

April 13, 2026

IGI Report Number **LG789638596**

Description **LABORATORY GROWN DIAMOND**

Shape and Cutting Style **ROUND BRILLIANT**

Measurements **6.52 - 6.55 X 4.05 MM**

GRADING RESULTS

Carat Weight **1.07 CARAT**

Color Grade **D**

Clarity Grade **VS 1**

Cut Grade **IDEAL**

ADDITIONAL GRADING INFORMATION

Polish **EXCELLENT**

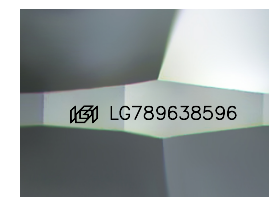
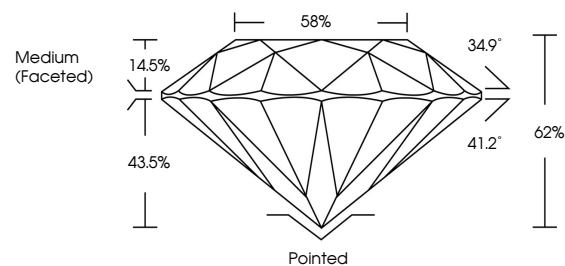
Symmetry **EXCELLENT**

Fluorescence **NONE**

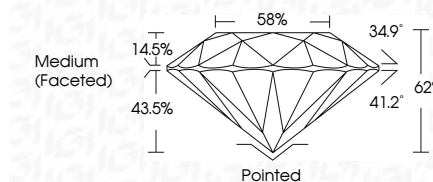
Inscription(s) **LG789638596**

Comments: This Laboratory Grown Diamond was created by Chemical Vapor Deposition (CVD) growth process. Type IIa

PROPORTIONS



Sample Image Used



COLOR

D E F G H I J Faint Very Light Light

CLARITY

FL	IF	VS ¹⁻²	VS ¹⁻²	SI ¹⁻²	I ¹⁻³
Flawless	Internally Flawless	Very Very Slightly Included	Very Slightly Included	Slightly Included	Included

ADDITIONAL GRADING INFORMATION

Polish **EXCELLENT**

Symmetry **EXCELLENT**

Fluorescence **NONE**

Inscription(s) **LG789638596**

Comments: This Laboratory Grown Diamond was created by Chemical Vapor Deposition (CVD) growth process. Type IIa



IGI



April 13, 2026
IGI Report No LG789638596
ROUND BRILLIANT
6.52 - 6.55 X 4.05 MM
Carat Weight 1.07 CARAT
Color Grade D
Clarity Grade VS 1
Cut Grade IDEAL
Depth 62%
Table 14.5%
Girdle 58%
Medium (Faceted)
Culet Pointed
Polish EXCELLENT
Symmetry EXCELLENT
Fluorescence NONE
Inscription(s) IGI LG789638596
Comments: This Laboratory Grown Diamond was created by Chemical Vapor Deposition (CVD) growth process. Type IIa