



ELECTRONIC COPY

LG790604434
Report verification at igi.org



April 11, 2026
IGI Report Number **LG790604434**
Description **LABORATORY GROWN DIAMOND**
Shape and Cutting Style **CUSHION MODIFIED BRILLIANT**
Measurements **8.72 X 6.82 X 4.50 MM**
GRADING RESULTS
Carat Weight **2.10 CARATS**
Color Grade **E**
Clarity Grade **VS 1**

April 11, 2026
IGI Report Number **LG790604434**
Description **LABORATORY GROWN DIAMOND**
Shape and Cutting Style **CUSHION MODIFIED BRILLIANT**
Measurements **8.72 X 6.82 X 4.50 MM**

GRADING RESULTS

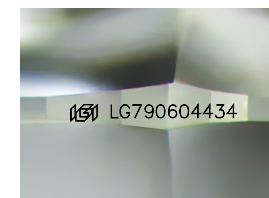
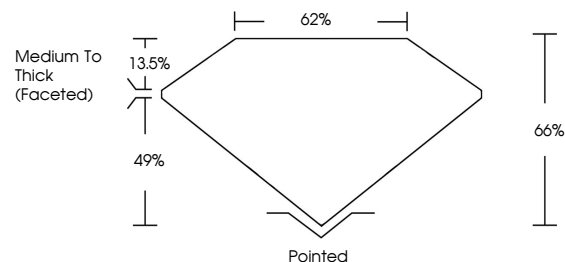
Carat Weight **2.10 CARATS**
Color Grade **E**
Clarity Grade **VS 1**

ADDITIONAL GRADING INFORMATION

Polish **EXCELLENT**
Symmetry **EXCELLENT**
Fluorescence **NONE**
Inscription(s) **IGI LG790604434**

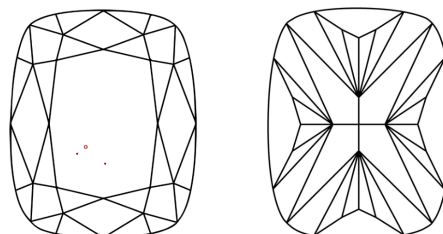
Comments: This Laboratory Grown Diamond was created by Chemical Vapor Deposition (CVD) growth process. Type IIa

PROPORTIONS



Sample Image Used

CLARITY CHARACTERISTICS



KEY TO SYMBOLS

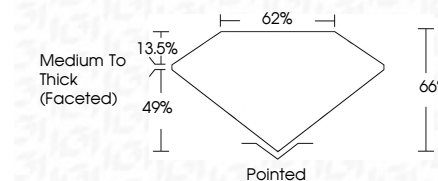
Red symbols indicate internal characteristics.
Green symbols indicate external characteristics.

COLOR

D E F G H I J Faint Very Light Light

CLARITY

| FL | IF | VS ¹⁻² | VS ¹⁻² | SI ¹⁻² | I ¹⁻³ |
|----------|---------------------|-----------------------------|------------------------|-------------------|------------------|
| Flawless | Internally Flawless | Very Very Slightly Included | Very Slightly Included | Slightly Included | Included |



ADDITIONAL GRADING INFORMATION

Polish **EXCELLENT**
Symmetry **EXCELLENT**
Fluorescence **NONE**
Inscription(s) **IGI LG790604434**
Comments: This Laboratory Grown Diamond was created by Chemical Vapor Deposition (CVD) growth process. Type IIa



IGI



April 11, 2026
IGI Report No **LG790604434**
CUSHION MODIFIED BRILLIANT
8.72 X 6.82 X 4.50 MM
Carat Weight **2.10 CARATS**
Color Grade **E**
Clarity Grade **VS 1**
Depth **66%**
Table **62%**
Girdle **Medium To Thick (Faceted)**
Culet **Pointed**
Polish **EXCELLENT**
Symmetry **EXCELLENT**
Fluorescence **NONE**
Inscription(s) **IGI LG790604434**

Comments: This Laboratory Grown Diamond was created by Chemical Vapor Deposition (CVD) growth process. Type IIa