



INTERNATIONAL GEMOLOGICAL INSTITUTE

ELECTRONIC COPY



April 13, 2026

IGI Report Number LG790606856

ROUND BRILLIANT
LABORATORY GROWN DIAMOND
5.91 - 5.96 X 3.70 MM

Carat Weight 0.81 CARAT
Color Grade D
Clarity Grade I.F.
Cut Grade IDEAL
Polish EXCELLENT
Symmetry EXCELLENT
Fluorescence NONE
Inscription(s) IGI LG790606856

Comments: As Grown - No indication of post-growth treatment. This Laboratory Grown Diamond was created by High Pressure High Temperature (HPHT) growth process. Type II

LABORATORY GROWN DIAMOND REPORT

April 13, 2026
IGI Report Number LG790606856
Description LABORATORY GROWN DIAMOND
Shape and Cutting Style ROUND BRILLIANT
Measurements 5.91 - 5.96 X 3.70 MM

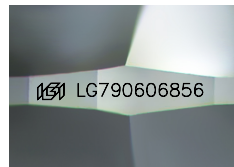
GRADING RESULTS

Carat Weight 0.81 CARAT
Color Grade D
Clarity Grade INTERNALLY FLAWLESS
Cut Grade IDEAL

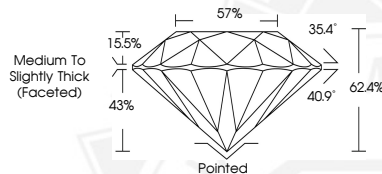
ADDITIONAL GRADING INFORMATION

Polish EXCELLENT
Symmetry EXCELLENT
Fluorescence NONE
Inscription(s) IGI LG790606856

Comments: As Grown - No indication of post-growth treatment. This Laboratory Grown Diamond was created by High Pressure High Temperature (HPHT) growth process. Type II



Sample Image Used



April 13, 2026

IGI Report Number LG790606856

ROUND BRILLIANT
LABORATORY GROWN DIAMOND
5.91 - 5.96 X 3.70 MM

Carat Weight 0.81 CARAT
Color Grade D
Clarity Grade I.F.
Cut Grade IDEAL
Polish EXCELLENT
Symmetry EXCELLENT
Fluorescence NONE
Inscription(s) IGI LG790606856

Comments: As Grown - No indication of post-growth treatment. This Laboratory Grown Diamond was created by High Pressure High Temperature (HPHT) growth process. Type II



THIS DOCUMENT WAS PRODUCED WITH THE FOLLOWING SECURITY MEASURES: SPECIAL DOCUMENT PAPER, INK SCREENS, WATERMARK, BACKGROUND DESIGNS, HOLOGRAM AND OTHER SECURITY FEATURES NOT LISTED AND DO EXCEED DOCUMENT SECURITY INDUSTRY GUIDELINES.

For terms & conditions and to verify this report, please visit www.igi.org