



**ELECTRONIC COPY**

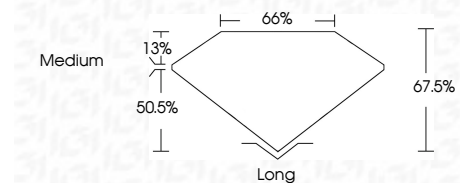
LG790626599  
Report verification at igi.org



April 13, 2026  
IGI Report Number **LG790626599**  
Description **LABORATORY GROWN DIAMOND**  
Shape and Cutting Style **EMERALD CUT**  
Measurements **8.79 X 6.03 X 4.07 MM**

**GRADING RESULTS**

Carat Weight **2.08 CARATS**  
Color Grade **E**  
Clarity Grade **VS 1**

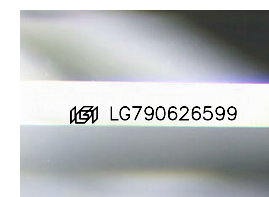


**ADDITIONAL GRADING INFORMATION**

Polish **EXCELLENT**  
Symmetry **EXCELLENT**  
Fluorescence **NONE**  
Inscription(s) **IGI LG790626599**  
Comments: This Laboratory Grown Diamond was created by Chemical Vapor Deposition (CVD) growth process. Type IIa

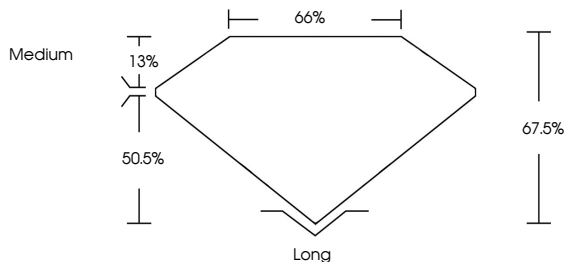


April 13, 2026  
IGI Report No. **LG790626599**  
**EMERALD CUT**  
2.08 CARATS  
E  
8.79 X 6.03 X 4.07 MM  
Carat Weight  
Color Grade  
Clarity Grade  
Depth  
Table  
Girdle  
Medium  
Long  
EXCELLENT  
EXCELLENT  
NONE  
IGI LG790626599  
Inscription(s)  
Comments: This Laboratory Grown Diamond was created by Chemical Vapor Deposition (CVD) growth process. Type IIa

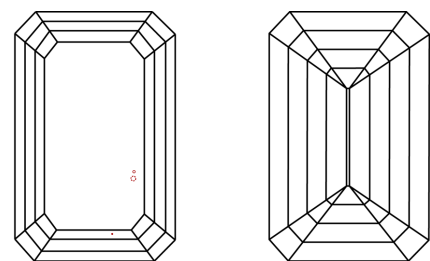


Sample Image Used

**PROPORTIONS**



**CLARITY CHARACTERISTICS**



**KEY TO SYMBOLS**

Red symbols indicate internal characteristics.  
Green symbols indicate external characteristics.

**COLOR**

D	E	F	G	H	I	J	Faint	Very Light	Light
---	---	---	---	---	---	---	-------	------------	-------

**CLARITY**

FL	IF	VS <sup>1-2</sup>	VS <sup>1-2</sup>	SI <sup>1-2</sup>	I <sup>1-3</sup>
Flawless	Internally Flawless	Very Very Slightly Included	Very Slightly Included	Slightly Included	Included

