



INTERNATIONAL GEMOLOGICAL INSTITUTE

LABORATORY GROWN DIAMOND REPORT

April 28, 2026
 IGI Report Number **LG790640250**
 Description **LABORATORY GROWN DIAMOND**
 Shape and Cutting Style **ROUND BRILLIANT**
 Measurements **5.06 - 5.08 X 3.10 MM**

GRADING RESULTS

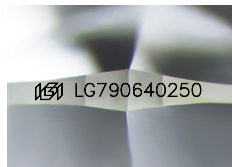
Carat Weight **0.50 CARAT**
 Color Grade **E**
 Clarity Grade **SI 1**
 Cut Grade **EXCELLENT**

ADDITIONAL GRADING INFORMATION

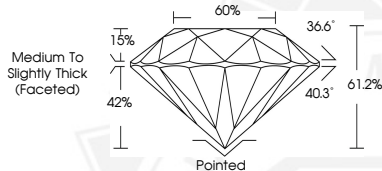
Polish **EXCELLENT**
 Symmetry **EXCELLENT**
 Fluorescence **NONE**
 Inscription(s) **IGI LG790640250**

Comments: As Grown - No indication of post-growth treatment. This Laboratory Grown Diamond was created by High Pressure High Temperature (HPHT) growth process. Type II

ELECTRONIC COPY



Sample Image Used



April 28, 2026

IGI Report Number **LG790640250**
ROUND BRILLIANT
LABORATORY GROWN DIAMOND
5.06 - 5.08 X 3.10 MM
 Carat Weight **0.50 CARAT**
 Color Grade **E**
 Clarity Grade **SI 1**
 Cut Grade **EXCELLENT**
 Polish **EXCELLENT**
 Symmetry **EXCELLENT**
 Fluorescence **NONE**
 Inscription(s) **IGI LG790640250**

Comments: As Grown - No indication of post-growth treatment. This Laboratory Grown Diamond was created by High Pressure High Temperature (HPHT) growth process. Type II



April 28, 2026

IGI Report Number **LG790640250**
ROUND BRILLIANT
LABORATORY GROWN DIAMOND
5.06 - 5.08 X 3.10 MM
 Carat Weight **0.50 CARAT**
 Color Grade **E**
 Clarity Grade **SI 1**
 Cut Grade **EXCELLENT**
 Polish **EXCELLENT**
 Symmetry **EXCELLENT**
 Fluorescence **NONE**
 Inscription(s) **IGI LG790640250**

Comments: As Grown - No indication of post-growth treatment. This Laboratory Grown Diamond was created by High Pressure High Temperature (HPHT) growth process. Type II



THIS DOCUMENT WAS PRODUCED WITH THE FOLLOWING SECURITY MEASURES: SPECIAL DOCUMENT PAPER, INK SCREENS, WATERMARK, BACKGROUND DESIGNS, HOLOGRAM AND OTHER SECURITY FEATURES NOT LISTED AND DO EXCEED DOCUMENT SECURITY INDUSTRY GUIDELINES.

For terms & conditions and to verify this report, please visit www.igi.org