



ELECTRONIC COPY

LG790642523 Report verification at igi.org



May 28, 2026 IGI Report Number LG790642523 Description LABORATORY GROWN DIAMOND Shape and Cutting Style CUT CORNERED RECTANGULAR MODIFIED BRILLIANT Measurements 15.41 X 10.68 X 7.11 MM GRADING RESULTS Carat Weight 10.07 CARATS Color Grade G Clarity Grade VVS 2

May 28, 2026 IGI Report Number LG790642523 Description LABORATORY GROWN DIAMOND Shape and Cutting Style CUT CORNERED RECTANGULAR MODIFIED BRILLIANT Measurements 15.41 X 10.68 X 7.11 MM

GRADING RESULTS

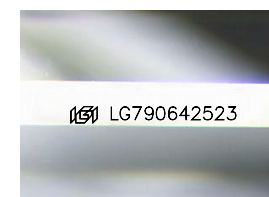
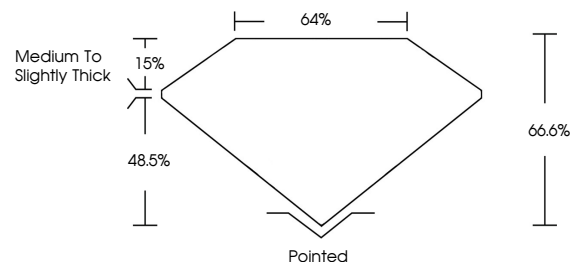
Carat Weight 10.07 CARATS Color Grade G Clarity Grade VVS 2

ADDITIONAL GRADING INFORMATION

Polish EXCELLENT Symmetry EXCELLENT Fluorescence NONE Inscription(s) LG790642523

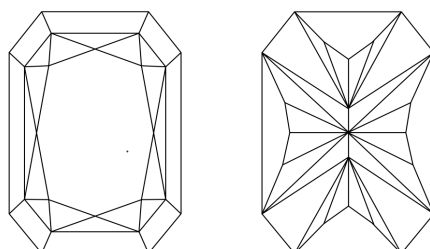
Comments: This Laboratory Grown Diamond was created by Chemical Vapor Deposition (CVD) growth process. Type IIa

PROPORTIONS



Sample Image Used

CLARITY CHARACTERISTICS



KEY TO SYMBOLS

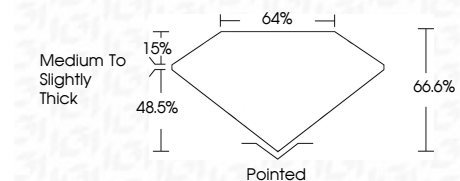
Red symbols indicate internal characteristics. Green symbols indicate external characteristics.

COLOR

D E F G H I J Faint Very Light Light

CLARITY

FL IF VVS 1-2 VS 1-2 SI 1-2 I 1-3 Flawless Internally Flawless Very Very Slightly Included Very Slightly Included Slightly Included Included



ADDITIONAL GRADING INFORMATION

Polish EXCELLENT Symmetry EXCELLENT Fluorescence NONE Inscription(s) LG790642523 Comments: This Laboratory Grown Diamond was created by Chemical Vapor Deposition (CVD) growth process. Type IIa



May 28, 2026 IGI Report No LG790642523 CUT CORNERED RECT. MODIFIED BRILLIANT 15.41 X 10.68 X 7.11 MM 10.07 CARATS G VVS 2 66.6% 48.5% Medium to Slightly Thick Pointed EXCELLENT EXCELLENT NONE NONE LG790642523 Comments: This Laboratory Grown Diamond was created by Chemical Vapor Deposition (CVD) growth process. Type IIa