



ELECTRONIC COPY

LG790644764
Report verification at igi.org



April 11, 2026
IGI Report Number **LG790644764**
Description **LABORATORY GROWN DIAMOND**
Shape and Cutting Style **CUSHION MODIFIED BRILLIANT**
Measurements **12.21 X 9.36 X 5.49 MM**
GRADING RESULTS
Carat Weight **5.06 CARATS**
Color Grade **G**
Clarity Grade **VVS 2**

LABORATORY GROWN DIAMOND REPORT

April 11, 2026
IGI Report Number **LG790644764**
Description **LABORATORY GROWN DIAMOND**
Shape and Cutting Style **CUSHION MODIFIED BRILLIANT**
Measurements **12.21 X 9.36 X 5.49 MM**

GRADING RESULTS

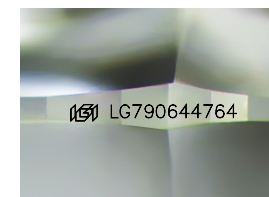
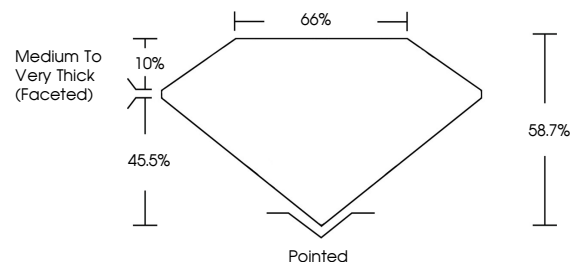
Carat Weight **5.06 CARATS**
Color Grade **G**
Clarity Grade **VVS 2**

ADDITIONAL GRADING INFORMATION

Polish **EXCELLENT**
Symmetry **EXCELLENT**
Fluorescence **NONE**
Inscription(s) **IGI LG790644764**

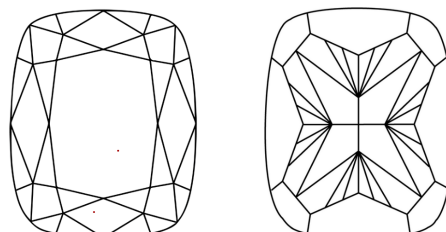
Comments: This Laboratory Grown Diamond was created by Chemical Vapor Deposition (CVD) growth process. Type IIa

PROPORTIONS



Sample Image Used

CLARITY CHARACTERISTICS



KEY TO SYMBOLS

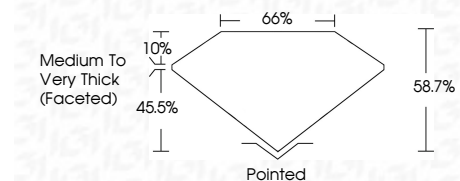
Red symbols indicate internal characteristics.
Green symbols indicate external characteristics.

COLOR

D E F G H I J Faint Very Light Light

CLARITY

FL	IF	VVS ¹⁻²	VS ¹⁻²	SI ¹⁻²	I ¹⁻³
Flawless	Internally Flawless	Very Very Slightly Included	Very Slightly Included	Slightly Included	Included



ADDITIONAL GRADING INFORMATION

Polish **EXCELLENT**
Symmetry **EXCELLENT**
Fluorescence **NONE**
Inscription(s) **IGI LG790644764**
Comments: This Laboratory Grown Diamond was created by Chemical Vapor Deposition (CVD) growth process. Type IIa



IGI



April 11, 2026
IGI Report No **LG790644764**
CUSHION MODIFIED BRILLIANT
5.06 CARATS
Carat Weight **G**
Color Grade **VVS 2**
Depth **58.7%**
Table **66%**
Girdle **Medium to Very Thick (Faceted)**
Culet **Pointed**
Polish **EXCELLENT**
Symmetry **EXCELLENT**
Fluorescence **NONE**
Inscription(s) **IGI LG790644764**

Comments: This Laboratory Grown Diamond was created by Chemical Vapor Deposition (CVD) growth process. Type IIa