



ELECTRONIC COPY

LG790645621
Report verification at igi.org



April 13, 2026
IGI Report Number **LG790645621**
Description **LABORATORY GROWN DIAMOND**
Shape and Cutting Style **SQUARE CUSHION MODIFIED BRILLIANT**
Measurements **10.65 X 10.64 X 6.88 MM**
GRADING RESULTS
Carat Weight **7.08 CARATS**
Color Grade **FANCY INTENSE YELLOW**
Clarity Grade **VVS 2**

April 13, 2026
IGI Report Number **LG790645621**
Description **LABORATORY GROWN DIAMOND**
Shape and Cutting Style **SQUARE CUSHION MODIFIED BRILLIANT**
Measurements **10.65 X 10.64 X 6.88 MM**

GRADING RESULTS

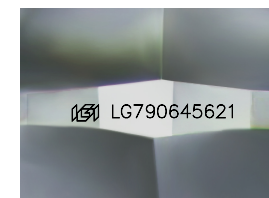
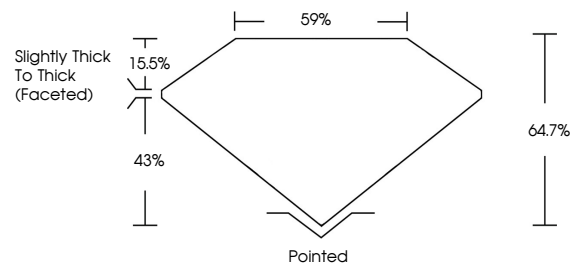
Carat Weight **7.08 CARATS**
Color Grade **FANCY INTENSE YELLOW**
Clarity Grade **VVS 2**

ADDITIONAL GRADING INFORMATION

Polish **EXCELLENT**
Symmetry **EXCELLENT**
Fluorescence **NONE**
Inscription(s) **IGI LG790645621**

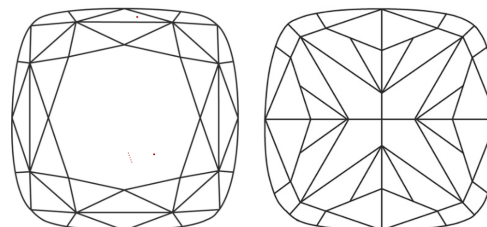
Comments: This Laboratory Grown Diamond was created by Chemical Vapor Deposition (CVD) growth process.

PROPORTIONS



Sample Image Used

CLARITY CHARACTERISTICS



KEY TO SYMBOLS

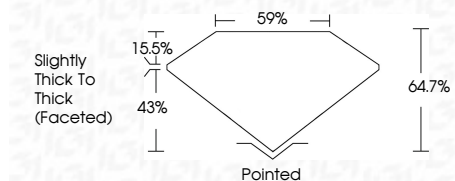
Red symbols indicate internal characteristics.
Green symbols indicate external characteristics.

COLOR

D E F G H I J Faint Very Light Light

CLARITY

FL	IF	VVS ¹⁻²	VS ¹⁻²	SI ¹⁻²	I ¹⁻³
Flawless	Internally Flawless	Very Very Slightly Included	Very Slightly Included	Slightly Included	Included



ADDITIONAL GRADING INFORMATION

Polish **EXCELLENT**
Symmetry **EXCELLENT**
Fluorescence **NONE**
Inscription(s) **IGI LG790645621**
Comments: This Laboratory Grown Diamond was created by Chemical Vapor Deposition (CVD) growth process.



IGI



April 13, 2026
IGI Report No **LG790645621**
SQUARE CUSHION MODIFIED BRILLIANT
7.08 CARATS
Carat Weight
FANCY INTENSE YELLOW
Color Grade
VVS 2
Clarity Grade
64.7%
Depth
59%
Table
Slightly Thick To Thick (Faceted)
Culet
Pointed
Polish
EXCELLENT
Symmetry
EXCELLENT
Fluorescence
NONE
Inscription(s)
IGI LG790645621

Comments: This Laboratory Grown Diamond was created by Chemical Vapor Deposition (CVD) growth process.