



**ELECTRONIC COPY**

LG790647005  
Report verification at igi.org



April 16, 2026  
IGI Report Number **LG790647005**

Description **LABORATORY GROWN DIAMOND**

Shape and Cutting Style **OVAL MODIFIED BRILLIANT**

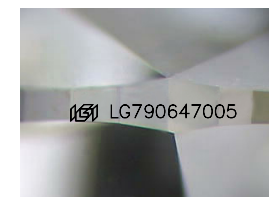
Measurements **9.24 X 6.36 X 4.52 MM**

**GRADING RESULTS**

Carat Weight **2.14 CARATS**

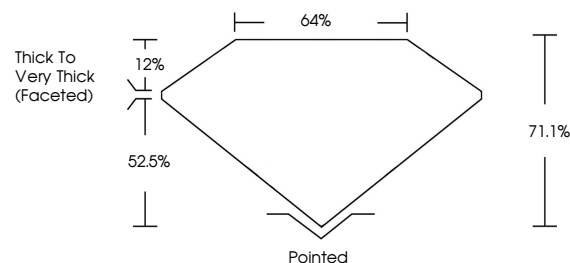
Color Grade **FANCY INTENSE YELLOW**

Clarity Grade **VVS 1**

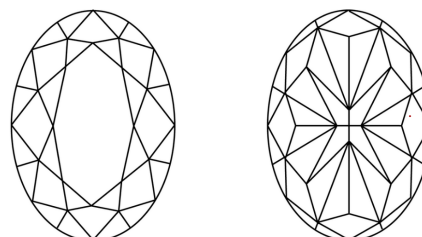


Sample Image Used

**PROPORTIONS**



**CLARITY CHARACTERISTICS**



**KEY TO SYMBOLS**

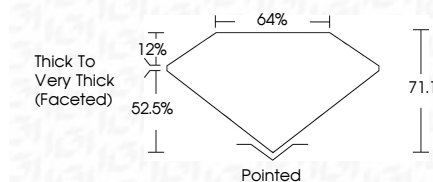
Red symbols indicate internal characteristics.  
Green symbols indicate external characteristics.

**COLOR**

D E F G H I J Faint Very Light Light

**CLARITY**

FL	IF	VS <sup>1-2</sup>	VS <sup>1-2</sup>	SI <sup>1-2</sup>	I <sup>1-3</sup>
Flawless	Internally Flawless	Very Very Slightly Included	Very Slightly Included	Slightly Included	Included



**ADDITIONAL GRADING INFORMATION**

Polish **EXCELLENT**

Symmetry **EXCELLENT**

Fluorescence **NONE**

Inscription(s) **IGI LG790647005**

Comments: This Laboratory Grown Diamond was created by Chemical Vapor Deposition (CVD) growth process.



**IGI**



April 16, 2026  
IGI Report No LG790647005  
**OVAL MODIFIED BRILLIANT**  
9.24 X 6.36 X 4.52 MM  
2.14 CARATS  
FANCY INTENSE YELLOW  
VVS 1  
71.1%  
64%  
Thick to Very Thick (Faceted)  
Pointed  
EXCELLENT  
EXCELLENT  
NONE  
IGI LG790647005  
Comments: This Laboratory Grown Diamond was created by Chemical Vapor Deposition (CVD) growth process.