



ELECTRONIC COPY

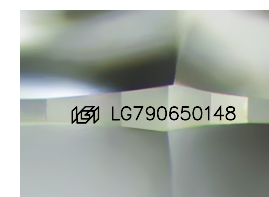
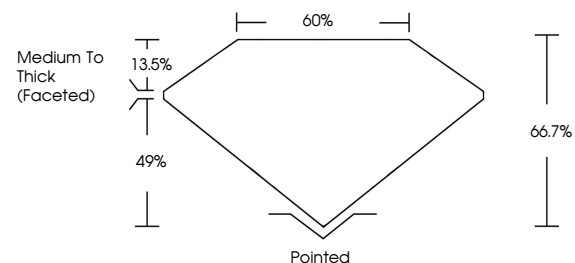
LG790650148
Report verification at igi.org



April 13, 2026
IGI Report Number **LG790650148**
Description **LABORATORY GROWN DIAMOND**
Shape and Cutting Style **CUSHION MODIFIED BRILLIANT**
Measurements **9.07 X 6.60 X 4.40 MM**
GRADING RESULTS
Carat Weight **2.10 CARATS**
Color Grade **F**
Clarity Grade **VVS 1**

April 13, 2026
IGI Report Number **LG790650148**
Description **LABORATORY GROWN DIAMOND**
Shape and Cutting Style **CUSHION MODIFIED BRILLIANT**
Measurements **9.07 X 6.60 X 4.40 MM**

PROPORTIONS

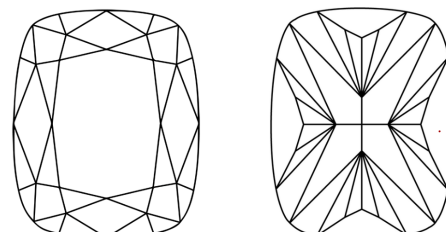


Sample Image Used

GRADING RESULTS

Carat Weight **2.10 CARATS**
Color Grade **F**
Clarity Grade **VVS 1**

CLARITY CHARACTERISTICS



KEY TO SYMBOLS

Red symbols indicate internal characteristics.
Green symbols indicate external characteristics.

ADDITIONAL GRADING INFORMATION

Polish **EXCELLENT**
Symmetry **EXCELLENT**
Fluorescence **NONE**
Inscription(s) **IGI LG790650148**

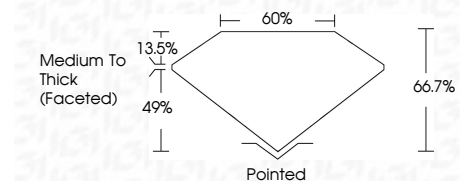
Comments: This Laboratory Grown Diamond was created by Chemical Vapor Deposition (CVD) growth process. Type IIa

COLOR

D E F G H I J Faint Very Light Light

CLARITY

FL	IF	VVS ¹⁻²	VS ¹⁻²	SI ¹⁻²	I ¹⁻³
Flawless	Internally Flawless	Very Very Slightly Included	Very Slightly Included	Slightly Included	Included



ADDITIONAL GRADING INFORMATION

Polish **EXCELLENT**
Symmetry **EXCELLENT**
Fluorescence **NONE**
Inscription(s) **IGI LG790650148**
Comments: This Laboratory Grown Diamond was created by Chemical Vapor Deposition (CVD) growth process. Type IIa



April 13, 2026
IGI Report No **LG790650148**
CUSHION MODIFIED BRILLIANT
9.07 X 6.60 X 4.40 MM
2.10 CARATS
F
VVS 1
66.7%
49%
Medium To Thick (Faceted)
Pointed
EXCELLENT
EXCELLENT
NONE
IGI LG790650148
Comments: This Laboratory Grown Diamond was created by Chemical Vapor Deposition (CVD) growth process. Type IIa