



ELECTRONIC COPY

LG790651173
Report verification at igi.org



April 30, 2026
IGI Report Number **LG790651173**
Description **LABORATORY GROWN DIAMOND**
Shape and Cutting Style **CUSHION MIXED CUT**
Measurements **8.91 X 8.32 X 5.37 MM**
GRADING RESULTS
Carat Weight **3.43 CARATS**
Color Grade **FANCY VIVID GREEN**
Clarity Grade **VVS 2**

April 30, 2026
IGI Report Number **LG790651173**
Description **LABORATORY GROWN DIAMOND**
Shape and Cutting Style **CUSHION MIXED CUT**
Measurements **8.91 X 8.32 X 5.37 MM**

GRADING RESULTS

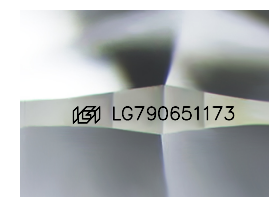
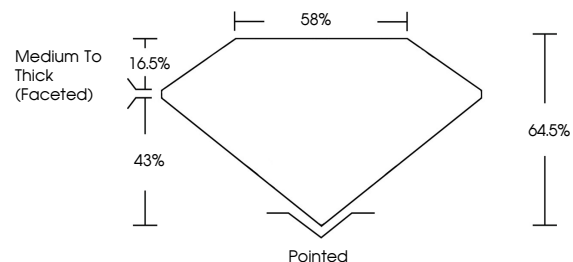
Carat Weight **3.43 CARATS**
Color Grade **FANCY VIVID GREEN**
Clarity Grade **VVS 2**

ADDITIONAL GRADING INFORMATION

Polish **GOOD**
Symmetry **EXCELLENT**
Fluorescence **NONE**
Inscription(s) **(IGI) LG790651173**

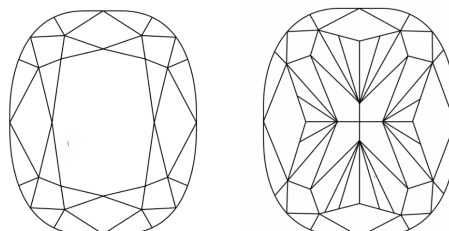
Comments: This Laboratory Grown Diamond was created by High Pressure High Temperature (HPHT) growth process.
Indications of post-growth treatment.

PROPORTIONS



Sample Image Used

CLARITY CHARACTERISTICS



KEY TO SYMBOLS

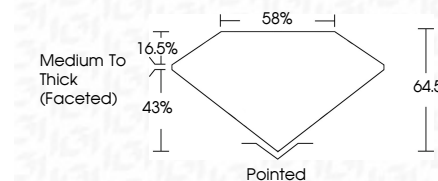
Red symbols indicate internal characteristics.
Green symbols indicate external characteristics.

COLOR

D E F G H I J Faint Very Light Light

CLARITY

FL	IF	VVS ¹⁻²	VS ¹⁻²	SI ¹⁻²	I ¹⁻³
Flawless	Internally Flawless	Very Very Slightly Included	Very Slightly Included	Slightly Included	Included



ADDITIONAL GRADING INFORMATION

Polish **GOOD**
Symmetry **EXCELLENT**
Fluorescence **NONE**
Inscription(s) **(IGI) LG790651173**
Comments: This Laboratory Grown Diamond was created by High Pressure High Temperature (HPHT) growth process.
Indications of post-growth treatment.



April 30, 2026
IGI Report No LG790651173
CUSHION MIXED CUT
8.91 X 8.32 X 5.37 MM
3.43 CARATS
FANCY VIVID GREEN
VVS 2
64.5%
85%
Medium To Thick (Faceted)
Pointed
GOOD
EXCELLENT
NONE
(IGI) LG790651173
Comments: This Laboratory Grown Diamond was created by High Pressure High Temperature (HPHT) growth process.
Indications of post-growth treatment.