



**ELECTRONIC COPY**

LG790653928  
Report verification at igi.org



April 27, 2026

IGI Report Number **LG790653928**

Description **LABORATORY GROWN DIAMOND**

Shape and Cutting Style **CUT CORNERED  
RECTANGULAR MODIFIED  
BRILLIANT**

Measurements **8.94 X 6.06 X 4.22 MM**

**GRADING RESULTS**

Carat Weight **2.23 CARATS**

Color Grade **FANCY YELLOW**

Clarity Grade **VS 1**

April 27, 2026

IGI Report Number **LG790653928**

Description **LABORATORY GROWN DIAMOND**

Shape and Cutting Style **CUT CORNERED RECTANGULAR  
MODIFIED BRILLIANT**

Measurements **8.94 X 6.06 X 4.22 MM**

**GRADING RESULTS**

Carat Weight **2.23 CARATS**

Color Grade **FANCY YELLOW**

Clarity Grade **VS 1**

**ADDITIONAL GRADING INFORMATION**

Polish **EXCELLENT**

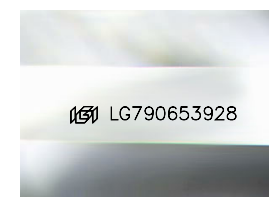
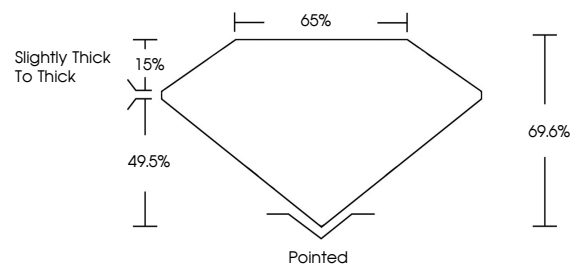
Symmetry **EXCELLENT**

Fluorescence **NONE**

Inscription(s) **IGI LG790653928**

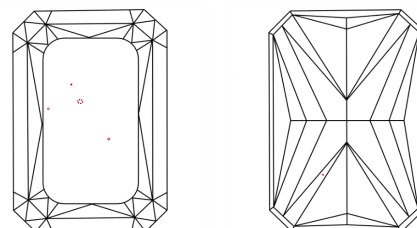
Comments: This Laboratory Grown Diamond was created by Chemical Vapor Deposition (CVD) growth process.

**PROPORTIONS**



Sample Image Used

**CLARITY CHARACTERISTICS**



**KEY TO SYMBOLS**

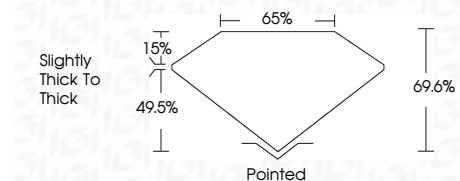
Red symbols indicate internal characteristics.  
Green symbols indicate external characteristics.

**COLOR**

D E F G H I J Faint Very Light Light

**CLARITY**

FL	IF	VS <sup>1-2</sup>	VS <sup>1-2</sup>	SI <sup>1-2</sup>	I <sup>1-3</sup>
Flawless	Internally Flawless	Very Very Slightly Included	Very Slightly Included	Slightly Included	Included



**ADDITIONAL GRADING INFORMATION**

Polish **EXCELLENT**

Symmetry **EXCELLENT**

Fluorescence **NONE**

Inscription(s) **IGI LG790653928**

Comments: This Laboratory Grown Diamond was created by Chemical Vapor Deposition (CVD) growth process.



**IGI**



April 27, 2026  
IGI Report No LG790653928  
CUT CORNERED RECT. MODIFIED BRILLIANT  
8.94 X 6.06 X 4.22 MM  
2.23 CARATS  
FANCY YELLOW  
VS 1  
69.6%  
65%  
Slightly thick to thick  
Pointed  
EXCELLENT  
EXCELLENT  
NONE  
IGI LG790653928  
Comments: This Laboratory Grown Diamond was created by Chemical Vapor Deposition (CVD) growth process.