



ELECTRONIC COPY

LG790656319 Report verification at igi.org



April 22, 2026 IGI Report Number LG790656319 Description LABORATORY GROWN DIAMOND Shape and Cutting Style ROUND BRILLIANT Measurements 7.19 - 7.25 X 4.57 MM GRADING RESULTS Carat Weight 1.50 CARAT Color Grade D Clarity Grade INTERNALLY FLAWLESS Cut Grade EXCELLENT

April 22, 2026 IGI Report Number LG790656319 Description LABORATORY GROWN DIAMOND Shape and Cutting Style ROUND BRILLIANT Measurements 7.19 - 7.25 X 4.57 MM

GRADING RESULTS

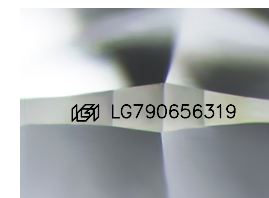
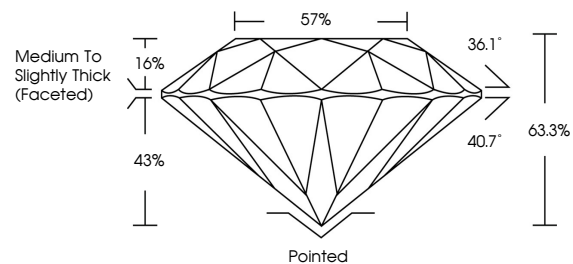
Carat Weight 1.50 CARAT Color Grade D Clarity Grade INTERNALLY FLAWLESS Cut Grade EXCELLENT

ADDITIONAL GRADING INFORMATION

Polish EXCELLENT Symmetry EXCELLENT Fluorescence NONE Inscription(s) IGI LG790656319

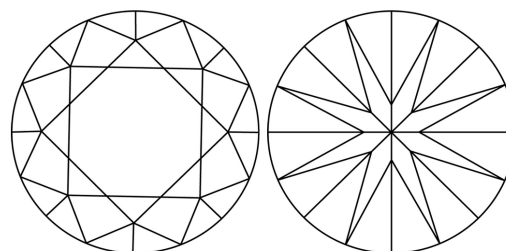
Comments: As Grown - No indication of post-growth treatment. This Laboratory Grown Diamond was created by High Pressure High Temperature (HPHT) growth process. Type II

PROPORTIONS



Sample Image Used

CLARITY CHARACTERISTICS



KEY TO SYMBOLS

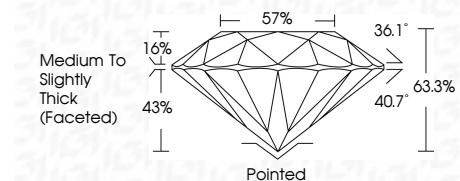
Red symbols indicate internal characteristics. Green symbols indicate external characteristics.

COLOR

D E F G H I J Faint Very Light Light

CLARITY

FL IF VS 1-2 VS 1-2 SI 1-2 I 1-3 Flawless Internally Flawless Very Very Slightly Included Very Slightly Included Slightly Included Included



ADDITIONAL GRADING INFORMATION

Polish EXCELLENT Symmetry EXCELLENT Fluorescence NONE Inscription(s) IGI LG790656319 Comments: As Grown - No indication of post-growth treatment. This Laboratory Grown Diamond was created by High Pressure High Temperature (HPHT) growth process. Type II



April 22, 2026 IGI Report No LG790656319 ROUND BRILLIANT 1.50 CARAT D EXCELLENT EXCELLENT NONE IGI LG790656319 7.19 - 7.25 X 4.57 MM 63.3% 57% Medium To Slightly Thick (Faceted) Pointed EXCELLENT EXCELLENT NONE NONE IGI LG790656319 Comments: As Grown - No indication of post-growth treatment. This Laboratory Grown Diamond was created by High Pressure High Temperature (HPHT) growth process. Type II