



ELECTRONIC COPY

LG790670377
Report verification at igi.org



April 15, 2026

IGI Report Number **LG790670377**

Description **LABORATORY GROWN DIAMOND**

Shape and Cutting Style **ROUND BRILLIANT**

Measurements **8.76 - 8.81 X 5.39 MM**

GRADING RESULTS

Carat Weight **2.58 CARATS**

Color Grade **E**

Clarity Grade **VS 1**

Cut Grade **IDEAL**

April 15, 2026
IGI Report Number **LG790670377**
Description **LABORATORY GROWN DIAMOND**
Shape and Cutting Style **ROUND BRILLIANT**
Measurements **8.76 - 8.81 X 5.39 MM**

GRADING RESULTS

Carat Weight **2.58 CARATS**

Color Grade **E**

Clarity Grade **VS 1**

Cut Grade **IDEAL**

ADDITIONAL GRADING INFORMATION

Polish **EXCELLENT**

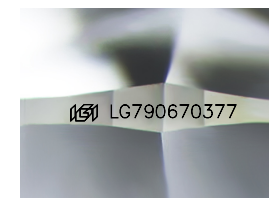
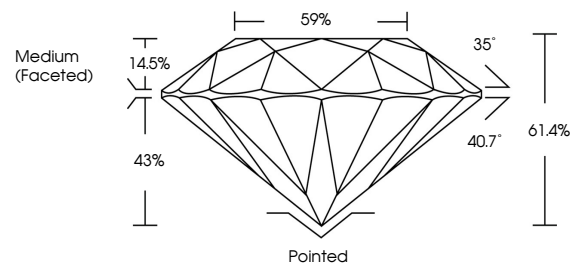
Symmetry **EXCELLENT**

Fluorescence **NONE**

Inscription(s) **IGI LG790670377**

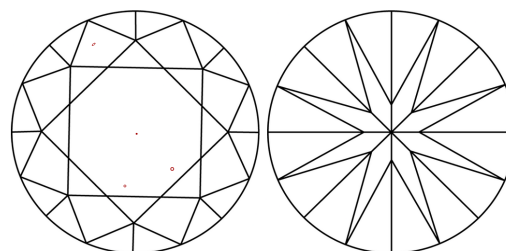
Comments: This Laboratory Grown Diamond was created by Chemical Vapor Deposition (CVD) growth process.
Type IIa

PROPORTIONS



Sample Image Used

CLARITY CHARACTERISTICS



KEY TO SYMBOLS

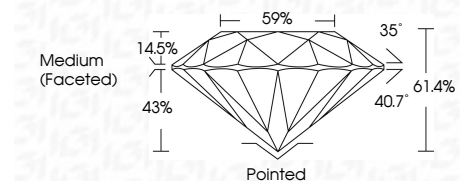
Red symbols indicate internal characteristics.
Green symbols indicate external characteristics.

COLOR

D E F G H I J Faint Very Light Light

CLARITY

FL	IF	VS ¹⁻²	VS ¹⁻²	SI ¹⁻²	I ¹⁻³
Flawless	Internally Flawless	Very Very Slightly Included	Very Slightly Included	Slightly Included	Included



ADDITIONAL GRADING INFORMATION

Polish **EXCELLENT**

Symmetry **EXCELLENT**

Fluorescence **NONE**

Inscription(s) **IGI LG790670377**

Comments: This Laboratory Grown Diamond was created by Chemical Vapor Deposition (CVD) growth process.
Type IIa



IGI



April 15, 2026	IGI Report No LG790670377	2.58 CARATS	E	VS 1	IDEAL	59%	Medium (Faceted)	Pointed	EXCELLENT	EXCELLENT	NONE	IGI LG790670377
8.76 - 8.81 X 5.39 MM	ROUND BRILLIANT	Color Grade	Clarity Grade	Cut Grade	Depth	Table	Girdle	Color	Polish	Symmetry	Fluorescence	Inscription(s)

Comments: This Laboratory Grown Diamond was created by Chemical Vapor Deposition (CVD) growth process.
Type IIa