



ELECTRONIC COPY

LG790671459
Report verification at igi.org



April 27, 2026

IGI Report Number **LG790671459**

Description **LABORATORY GROWN DIAMOND**

Shape and Cutting Style **EMERALD CUT**

Measurements **11.80 X 8.41 X 5.62 MM**

GRADING RESULTS

Carat Weight **5.51 CARATS**

Color Grade **D**

Clarity Grade **FLAWLESS**

Cut Grade **EXCELLENT**

April 27, 2026
IGI Report Number **LG790671459**
Description **LABORATORY GROWN DIAMOND**
Shape and Cutting Style **EMERALD CUT**
Measurements **11.80 X 8.41 X 5.62 MM**

GRADING RESULTS

Carat Weight **5.51 CARATS**

Color Grade **D**

Clarity Grade **FLAWLESS**

Cut Grade **EXCELLENT**

ADDITIONAL GRADING INFORMATION

Polish **EXCELLENT**

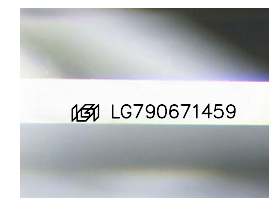
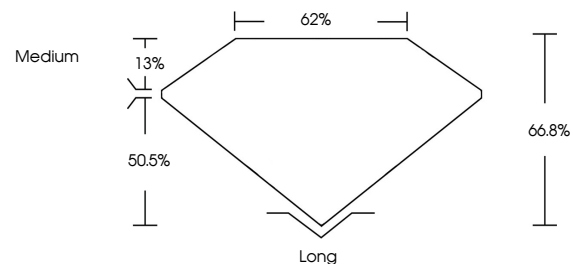
Symmetry **EXCELLENT**

Fluorescence **NONE**

Inscription(s) **IGI LG790671459**

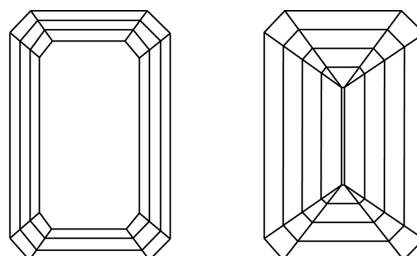
Comments: As Grown - No indication of post-growth treatment.
This Laboratory Grown Diamond was created by High Pressure High Temperature (HPHT) growth process.
Type II

PROPORTIONS



Sample Image Used

CLARITY CHARACTERISTICS



KEY TO SYMBOLS

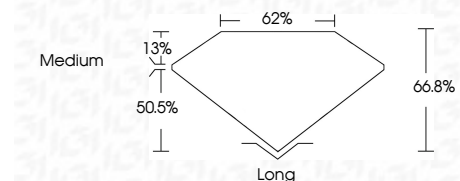
Red symbols indicate internal characteristics.
Green symbols indicate external characteristics.

COLOR

D E F G H I J Faint Very Light Light

CLARITY

| FL | IF | VS ¹⁻² | VS ¹⁻² | SI ¹⁻² | I ¹⁻³ |
|----------|---------------------|-----------------------------|------------------------|-------------------|------------------|
| Flawless | Internally Flawless | Very Very Slightly Included | Very Slightly Included | Slightly Included | Included |



ADDITIONAL GRADING INFORMATION

Polish **EXCELLENT**

Symmetry **EXCELLENT**

Fluorescence **NONE**

Inscription(s) **IGI LG790671459**

Comments: As Grown - No indication of post-growth treatment.
This Laboratory Grown Diamond was created by High Pressure High Temperature (HPHT) growth process.
Type II



IGI



| | | | | | | | | | | | | | | |
|----------------|---------------------------|-------------|------------------------|---|----------|-----------|-------|-----|--------|------|-----------|-----------|------|-----------------|
| April 27, 2026 | IGI Report No LG790671459 | EMERALD CUT | 5.51 CARATS | D | FLAWLESS | EXCELLENT | 66.8% | 62% | Medium | Long | EXCELLENT | EXCELLENT | NONE | IGI LG790671459 |
| | | | 11.80 X 8.41 X 5.62 MM | | | | | | | | | | | |

Comments: As Grown - No indication of post-growth treatment.
This Laboratory Grown Diamond was created by High Pressure High Temperature (HPHT) growth process.
Type II