



ELECTRONIC COPY

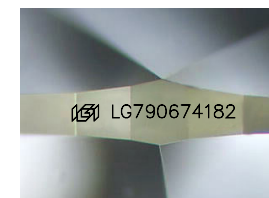
LG790674182
Report verification at igi.org



April 13, 2026
IGI Report Number **LG790674182**
Description **LABORATORY GROWN DIAMOND**

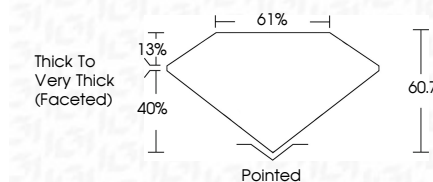
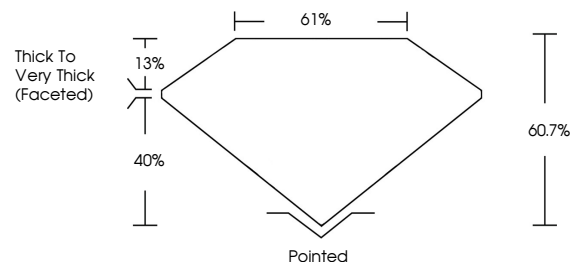
Shape and Cutting Style **PEAR MODIFIED BRILLIANT**
Measurements **10.47 X 6.19 X 3.76 MM**

GRADING RESULTS
Carat Weight **1.71 CARAT**
Color Grade **FANCY VIVID BLUE**
Clarity Grade **VS 1**

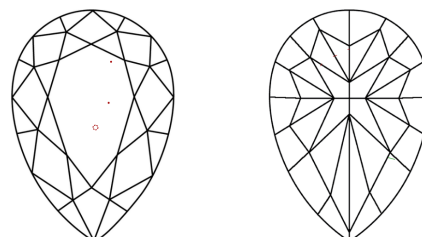


Sample Image Used

PROPORTIONS



CLARITY CHARACTERISTICS



KEY TO SYMBOLS

Red symbols indicate internal characteristics.
Green symbols indicate external characteristics.

COLOR

D E F G H I J Faint Very Light Light

CLARITY

FL	IF	VS ¹⁻²	VS ¹⁻²	SI ¹⁻²	I ¹⁻³
Flawless	Internally Flawless	Very Very Slightly Included	Very Slightly Included	Slightly Included	Included

ADDITIONAL GRADING INFORMATION

Polish **VERY GOOD**
Symmetry **EXCELLENT**
Fluorescence **NONE**

Inscription(s) **IGI LG790674182**
Comments: This Laboratory Grown Diamond was created by Chemical Vapor Deposition (CVD) growth process. Indications of post-growth treatment.



April 13, 2026
IGI Report No **LG790674182**
PEAR MODIFIED BRILLIANT
10.47 X 6.19 X 3.76 MM
1.71 CARAT
FANCY VIVID BLUE
VS 1
60.7%
61%
Thick to Very Thick (Faceted)
Pointed
VERY GOOD
EXCELLENT
NONE
IGI LG790674182

Comments: This Laboratory Grown Diamond was created by Chemical Vapor Deposition (CVD) growth process. Indications of post-growth treatment.