



ELECTRONIC COPY

LG790674280
Report verification at igi.org



April 13, 2026

IGI Report Number **LG790674280**

Description **LABORATORY GROWN DIAMOND**

Shape and Cutting Style **CUSHION BRILLIANT**

Measurements **10.65 X 8.13 X 5.37 MM**

GRADING RESULTS

Carat Weight **3.55 CARATS**

Color Grade **FANCY VIVID GREEN**

Clarity Grade **VS 1**

April 13, 2026
IGI Report Number **LG790674280**
Description **LABORATORY GROWN DIAMOND**
Shape and Cutting Style **CUSHION BRILLIANT**
Measurements **10.65 X 8.13 X 5.37 MM**

GRADING RESULTS

Carat Weight **3.55 CARATS**

Color Grade **FANCY VIVID GREEN**

Clarity Grade **VS 1**

ADDITIONAL GRADING INFORMATION

Polish **EXCELLENT**

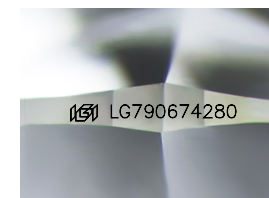
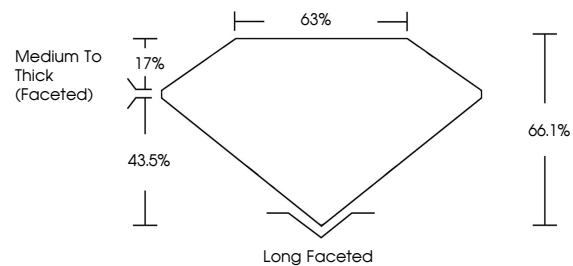
Symmetry **EXCELLENT**

Fluorescence **NONE**

Inscription(s) **LG790674280**

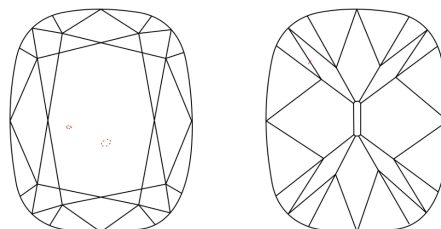
Comments: This Laboratory Grown Diamond was created by Chemical Vapor Deposition (CVD) growth process.
Indications of post-growth treatment.

PROPORTIONS



Sample Image Used

CLARITY CHARACTERISTICS



KEY TO SYMBOLS

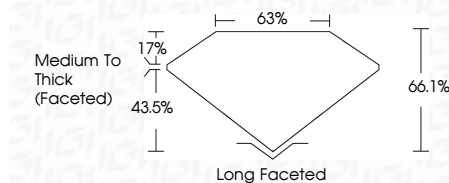
Red symbols indicate internal characteristics.
Green symbols indicate external characteristics.

COLOR

D E F G H I J Faint Very Light Light

CLARITY

FL	IF	VS ¹⁻²	VS ¹⁻²	SI ¹⁻²	I ¹⁻³
Flawless	Internally Flawless	Very Very Slightly Included	Very Slightly Included	Slightly Included	Included



ADDITIONAL GRADING INFORMATION

Polish **EXCELLENT**

Symmetry **EXCELLENT**

Fluorescence **NONE**

Inscription(s) **LG790674280**

Comments: This Laboratory Grown Diamond was created by Chemical Vapor Deposition (CVD) growth process.
Indications of post-growth treatment.



IGI



April 13, 2026
IGI Report No **LG790674280**
CUSHION BRILLIANT
Carat Weight **3.55 CARATS**
Color Grade **FANCY VIVID GREEN**
Clarity Grade **VS 1**
Depth **66.1%**
Table **63%**
Girdle **Medium To Thick (Faceted)**
Culet **Long Faceted**
Polish **EXCELLENT**
Symmetry **EXCELLENT**
Fluorescence **NONE**
Inscription(s) **LG790674280**
Comments: This Laboratory Grown Diamond was created by Chemical Vapor Deposition (CVD) growth process.
Indications of post-growth treatment.