



April 27, 2026

IGI Report Number **LG790675830**

**OVAL BRILLIANT  
LABORATORY GROWN DIAMOND  
7.05 X 4.85 X 3.15 MM**

Carat Weight	<b>0.72 CARAT</b>
Color Grade	<b>E</b>
Clarity Grade	<b>VS 2</b>
Polish	<b>GOOD</b>
Symmetry	<b>VERY GOOD</b>
Fluorescence	<b>NONE</b>
Inscription(s)	<b>IGI LG790675830</b>

Comments: This Laboratory Grown Diamond was created by Chemical Vapor Deposition (CVD) growth process. Type IIa

**LABORATORY GROWN DIAMOND REPORT**

April 27, 2026  
IGI Report Number **LG790675830**  
Description **LABORATORY GROWN DIAMOND**  
Shape and Cutting Style **OVAL BRILLIANT**  
Measurements **7.05 X 4.85 X 3.15 MM**

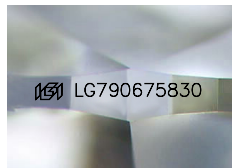
**GRADING RESULTS**

Carat Weight **0.72 CARAT**  
Color Grade **E**  
Clarity Grade **VS 2**

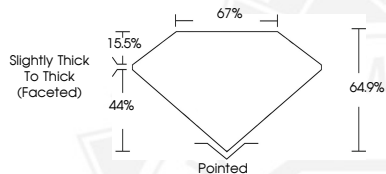
**ADDITIONAL GRADING INFORMATION**

Polish **GOOD**  
Symmetry **VERY GOOD**  
Fluorescence **NONE**  
Inscription(s) **IGI LG790675830**

Comments: This Laboratory Grown Diamond was created by Chemical Vapor Deposition (CVD) growth process.  
Type IIa



Sample Image Used



April 27, 2026

IGI Report Number **LG790675830**

**OVAL BRILLIANT  
LABORATORY GROWN DIAMOND  
7.05 X 4.85 X 3.15 MM**

Carat Weight	<b>0.72 CARAT</b>
Color Grade	<b>E</b>
Clarity Grade	<b>VS 2</b>
Polish	<b>GOOD</b>
Symmetry	<b>VERY GOOD</b>
Fluorescence	<b>NONE</b>
Inscription(s)	<b>IGI LG790675830</b>

Comments: This Laboratory Grown Diamond was created by Chemical Vapor Deposition (CVD) growth process. Type IIa



THIS DOCUMENT WAS PRODUCED WITH THE FOLLOWING SECURITY MEASURES: SPECIAL DOCUMENT PAPER, INK SCREENS, WATERMARK, BACKGROUND DESIGNS, HOLOGRAM AND OTHER SECURITY FEATURES NOT LISTED AND DO EXCEED DOCUMENT SECURITY INDUSTRY GUIDELINES.