



ELECTRONIC COPY

LG790692258
Report verification at igi.org



April 13, 2026
IGI Report Number **LG790692258**
Description **LABORATORY GROWN DIAMOND**
Shape and Cutting Style **CUSHION MODIFIED BRILLIANT**
Measurements **10.20 X 7.57 X 5.11 MM**
GRADING RESULTS
Carat Weight **3.09 CARATS**
Color Grade **F**
Clarity Grade **VS 1**

April 13, 2026
IGI Report Number **LG790692258**
Description **LABORATORY GROWN DIAMOND**
Shape and Cutting Style **CUSHION MODIFIED BRILLIANT**
Measurements **10.20 X 7.57 X 5.11 MM**

GRADING RESULTS

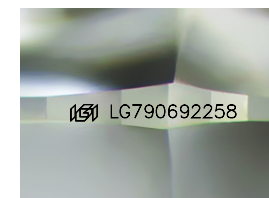
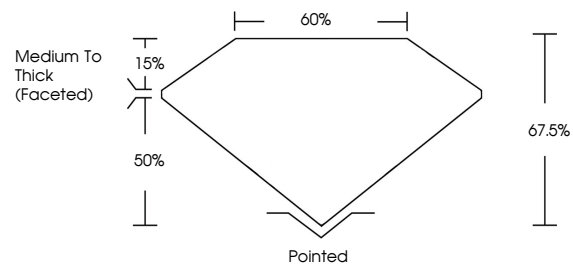
Carat Weight **3.09 CARATS**
Color Grade **F**
Clarity Grade **VS 1**

ADDITIONAL GRADING INFORMATION

Polish **EXCELLENT**
Symmetry **EXCELLENT**
Fluorescence **NONE**
Inscription(s) **IGI LG790692258**

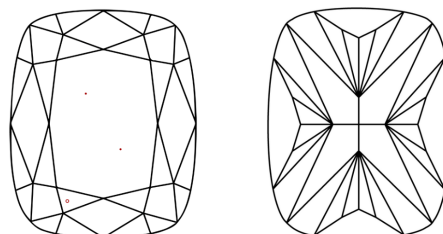
Comments: This Laboratory Grown Diamond was created by Chemical Vapor Deposition (CVD) growth process. Type IIa

PROPORTIONS



Sample Image Used

CLARITY CHARACTERISTICS



KEY TO SYMBOLS

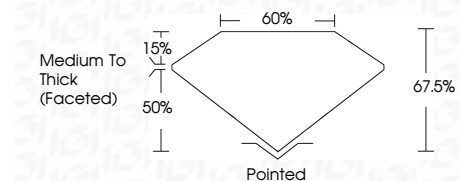
Red symbols indicate internal characteristics.
Green symbols indicate external characteristics.

COLOR

D E F G H I J Faint Very Light Light

CLARITY

FL	IF	VS ¹⁻²	VS ¹⁻²	SI ¹⁻²	I ¹⁻³
Flawless	Internally Flawless	Very Very Slightly Included	Very Slightly Included	Slightly Included	Included



ADDITIONAL GRADING INFORMATION

Polish **EXCELLENT**
Symmetry **EXCELLENT**
Fluorescence **NONE**
Inscription(s) **IGI LG790692258**
Comments: This Laboratory Grown Diamond was created by Chemical Vapor Deposition (CVD) growth process. Type IIa



April 13, 2026
IGI Report No LG790692258
CUSHION MODIFIED BRILLIANT
10.20 X 7.57 X 5.11 MM
3.09 CARATS
F
Color Grade
VS 1
Clarity Grade
67.5%
50%
Table
Girdle
Medium To Thick (Faceted)
Pointed
Culet
EXCELLENT
Polish
EXCELLENT
Symmetry
EXCELLENT
Fluorescence
NONE
Inscription(s)
IGI LG790692258
Comments: This Laboratory Grown Diamond was created by Chemical Vapor Deposition (CVD) growth process. Type IIa