



ELECTRONIC COPY

LG790692857 Report verification at igi.org



May 7, 2026 IGI Report Number LG790692857 Description LABORATORY GROWN DIAMOND Shape and Cutting Style CUSHION MODIFIED BRILLIANT Measurements 9.57 X 6.47 X 4.57 MM GRADING RESULTS Carat Weight 2.56 CARATS Color Grade FANCY INTENSE PINK Clarity Grade VS 2

May 7, 2026 IGI Report Number LG790692857 Description LABORATORY GROWN DIAMOND Shape and Cutting Style CUSHION MODIFIED BRILLIANT Measurements 9.57 X 6.47 X 4.57 MM

GRADING RESULTS

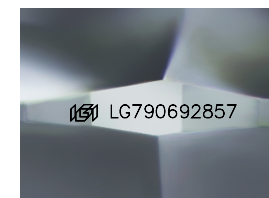
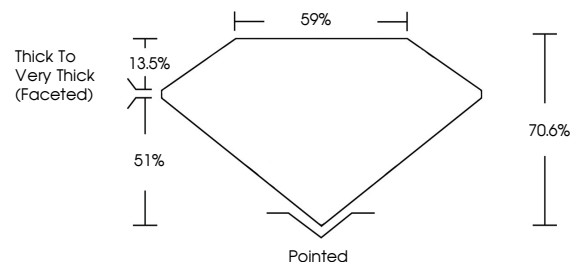
Carat Weight 2.56 CARATS Color Grade FANCY INTENSE PINK Clarity Grade VS 2

ADDITIONAL GRADING INFORMATION

Polish EXCELLENT Symmetry EXCELLENT Fluorescence SLIGHT Inscription(s) IGI LG790692857

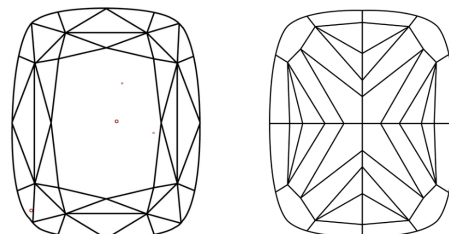
Comments: This Laboratory Grown Diamond was created by Chemical Vapor Deposition (CVD) growth process. Indications of post-growth treatment.

PROPORTIONS



Sample Image Used

CLARITY CHARACTERISTICS



KEY TO SYMBOLS

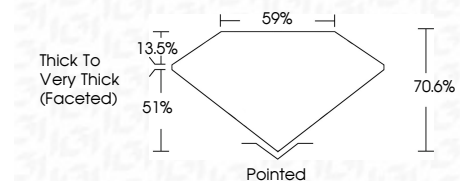
Red symbols indicate internal characteristics. Green symbols indicate external characteristics.

COLOR

D E F G H I J Faint Very Light Light

CLARITY

FL IF VS 1-2 VS 1-2 SI 1-2 I 1-3 Flawless Internally Flawless Very Very Slightly Included Very Slightly Included Slightly Included Included



ADDITIONAL GRADING INFORMATION

Polish EXCELLENT Symmetry EXCELLENT Fluorescence SLIGHT Inscription(s) IGI LG790692857 Comments: This Laboratory Grown Diamond was created by Chemical Vapor Deposition (CVD) growth process. Indications of post-growth treatment.



May 7, 2026 IGI Report No LG790692857 CUSHION MODIFIED BRILLIANT 9.57 X 6.47 X 4.57 MM 2.56 CARATS FANCY INTENSE PINK VS 2 70.6% 59% Thick to Very Thick (Faceted) Pointed EXCELLENT EXCELLENT SLIGHT IGI LG790692857 Comments: This Laboratory Grown Diamond was created by Chemical Vapor Deposition (CVD) growth process. Indications of post-growth treatment.