



ELECTRONIC COPY

LG790693477
Report verification at igi.org



April 20, 2026

IGI Report Number **LG790693477**

Description **LABORATORY GROWN DIAMOND**

Shape and Cutting Style **PRINCESS CUT**

Measurements **7.93 X 7.93 X 5.22 MM**

GRADING RESULTS

Carat Weight **3.07 CARATS**

Color Grade **FANCY INTENSE YELLOW**

Clarity Grade **VS 1**

April 20, 2026
IGI Report Number **LG790693477**
Description **LABORATORY GROWN DIAMOND**
Shape and Cutting Style **PRINCESS CUT**
Measurements **7.93 X 7.93 X 5.22 MM**

GRADING RESULTS

Carat Weight **3.07 CARATS**

Color Grade **FANCY INTENSE YELLOW**

Clarity Grade **VS 1**

ADDITIONAL GRADING INFORMATION

Polish **EXCELLENT**

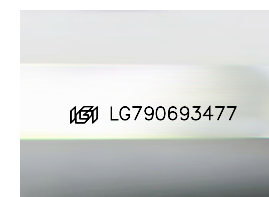
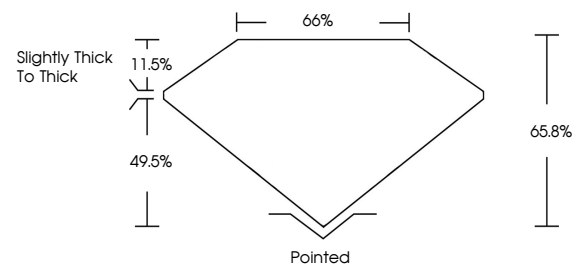
Symmetry **EXCELLENT**

Fluorescence **NONE**

Inscription(s) **IGI LG790693477**

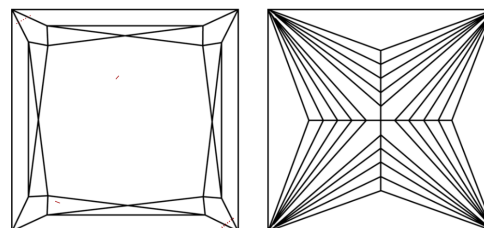
Comments: This Laboratory Grown Diamond was created by Chemical Vapor Deposition (CVD) growth process. Indications of post-growth treatment.

PROPORTIONS



Sample Image Used

CLARITY CHARACTERISTICS



KEY TO SYMBOLS

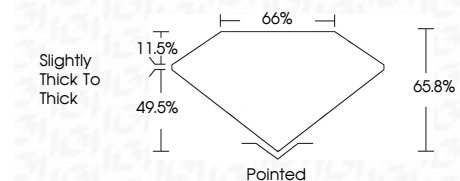
Red symbols indicate internal characteristics.
Green symbols indicate external characteristics.

COLOR

D E F G H I J Faint Very Light Light

CLARITY

FL	IF	VS ¹⁻²	VS ¹⁻²	SI ¹⁻²	I ¹⁻³
Flawless	Internally Flawless	Very Very Slightly Included	Very Slightly Included	Slightly Included	Included



ADDITIONAL GRADING INFORMATION

Polish **EXCELLENT**

Symmetry **EXCELLENT**

Fluorescence **NONE**

Inscription(s) **IGI LG790693477**

Comments: This Laboratory Grown Diamond was created by Chemical Vapor Deposition (CVD) growth process. Indications of post-growth treatment.



April 20, 2026
IGI Report No. **LG790693477**
PRINCESS CUT
3.07 CARATS
Carat Weight
Color Grade **FANCY INTENSE YELLOW**
Clarity Grade **VS 1**
Depth **65.8%**
Table **66%**
Girdle **Slightly thick to thick**
Culet **Pointed**
Polish **EXCELLENT**
Symmetry **EXCELLENT**
Fluorescence **NONE**
Inscription(s) **IGI LG790693477**
Comments: This Laboratory Grown Diamond was created by Chemical Vapor Deposition (CVD) growth process. Indications of post-growth treatment.