



ELECTRONIC COPY

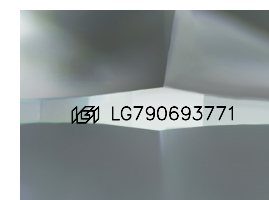
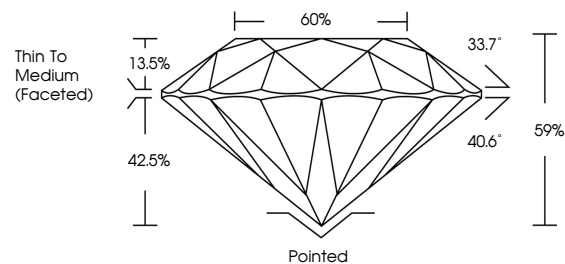
LG790693771
Report verification at igi.org



April 13, 2026
IGI Report Number LG790693771
Description LABORATORY GROWN DIAMOND
Shape and Cutting Style ROUND BRILLIANT
Measurements 8.21 - 8.29 X 4.85 MM
GRADING RESULTS
Carat Weight 1.99 CARAT
Color Grade E
Clarity Grade VS 1
Cut Grade IDEAL

April 13, 2026
IGI Report Number LG790693771
Description LABORATORY GROWN DIAMOND
Shape and Cutting Style ROUND BRILLIANT
Measurements 8.21 - 8.29 X 4.85 MM

PROPORTIONS

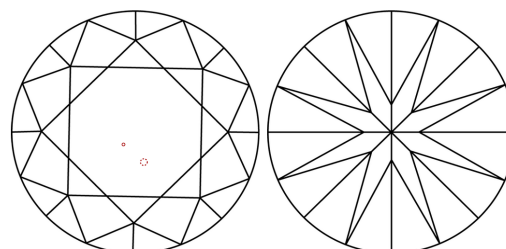


Sample Image Used

GRADING RESULTS

Carat Weight 1.99 CARAT
Color Grade E
Clarity Grade VS 1
Cut Grade IDEAL

CLARITY CHARACTERISTICS



KEY TO SYMBOLS

Red symbols indicate internal characteristics.
Green symbols indicate external characteristics.

ADDITIONAL GRADING INFORMATION

Polish EXCELLENT
Symmetry EXCELLENT
Fluorescence NONE
Inscription(s) IGI LG790693771

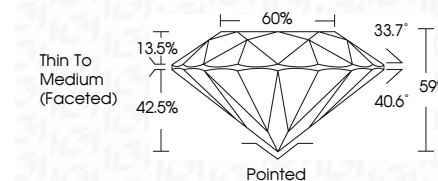
Comments: This Laboratory Grown Diamond was created by Chemical Vapor Deposition (CVD) growth process. Type IIa

COLOR

D E F G H I J Faint Very Light Light

CLARITY

FL IF VS 1-2 VS 2-3 SI 1-2 I 1-3
Flawless Internally Flawless Very Very Slightly Included Very Slightly Included Slightly Included Included



ADDITIONAL GRADING INFORMATION

Polish EXCELLENT
Symmetry EXCELLENT
Fluorescence NONE
Inscription(s) IGI LG790693771
Comments: This Laboratory Grown Diamond was created by Chemical Vapor Deposition (CVD) growth process. Type IIa



April 13, 2026
IGI Report No LG790693771
ROUND BRILLIANT
1.99 CARAT E
8.21 - 8.29 X 4.85 MM
Color Grade VS 1
Clarity Grade IDEAL
Depth 59%
Table 60%
Girdle Thin To Medium (Faceted)
Culet Pointed
Polish EXCELLENT
Symmetry EXCELLENT
Fluorescence NONE
Inscription(s) IGI LG790693771
Comments: This Laboratory Grown Diamond was created by Chemical Vapor Deposition (CVD) growth process. Type IIa