



ELECTRONIC COPY

LG791601793
Report verification at igi.org



May 27, 2026

IGI Report Number **LG791601793**

Description **LABORATORY GROWN DIAMOND**

Shape and Cutting Style **EMERALD CUT**

Measurements **9.32 X 6.48 X 4.38 MM**

GRADING RESULTS

Carat Weight **2.63 CARATS**

Color Grade **FANCY INTENSE PINK**

Clarity Grade **VS 1**

LABORATORY GROWN DIAMOND REPORT

May 27, 2026

IGI Report Number **LG791601793**

Description **LABORATORY GROWN DIAMOND**

Shape and Cutting Style **EMERALD CUT**

Measurements **9.32 X 6.48 X 4.38 MM**

GRADING RESULTS

Carat Weight **2.63 CARATS**

Color Grade **FANCY INTENSE PINK**

Clarity Grade **VS 1**

ADDITIONAL GRADING INFORMATION

Polish **EXCELLENT**

Symmetry **EXCELLENT**

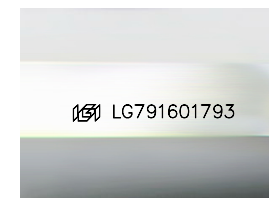
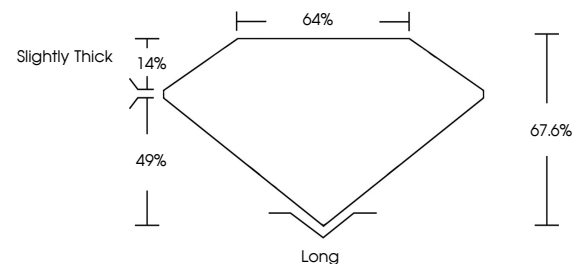
Fluorescence **SLIGHT**

Inscription(s) **IGI LG791601793**

Comments: This Laboratory Grown Diamond was created by Chemical Vapor Deposition (CVD) growth process.

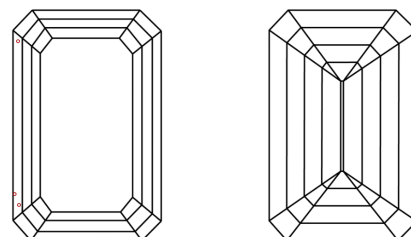
Indications of post-growth treatment.

PROPORTIONS



Sample Image Used

CLARITY CHARACTERISTICS



KEY TO SYMBOLS

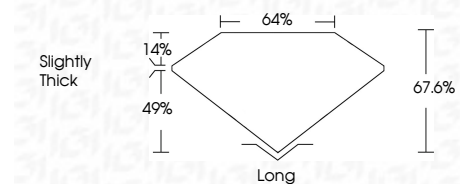
Red symbols indicate internal characteristics.
Green symbols indicate external characteristics.

COLOR

D E F G H I J Faint Very Light Light

CLARITY

FL	IF	VS ¹⁻²	VS ¹⁻²	SI ¹⁻²	I ¹⁻³
Flawless	Internally Flawless	Very Very Slightly Included	Very Slightly Included	Slightly Included	Included



ADDITIONAL GRADING INFORMATION

Polish **EXCELLENT**

Symmetry **EXCELLENT**

Fluorescence **SLIGHT**

Inscription(s) **IGI LG791601793**

Comments: This Laboratory Grown Diamond was created by Chemical Vapor Deposition (CVD) growth process. Indications of post-growth treatment.



IGI



May 27, 2026
IGI Report No LG791601793
EMERALD CUT

2.63 CARATS
Carat Weight
FANCY INTENSE PINK
Color Grade

VS 1
Clarity Grade

67.6%
Depth

64%
Table

Slightly Thick
Girdle

Long
Culet
EXCELLENT
Polish

EXCELLENT
Symmetry

SLIGHT
Fluorescence

IGI LG791601793
Inscription(s)

Comments: This Laboratory Grown Diamond was created by Chemical Vapor Deposition (CVD) growth process. Indications of post-growth treatment.