



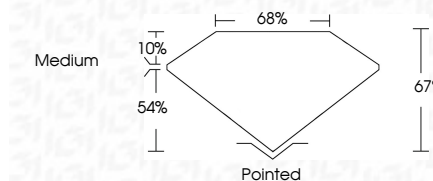
ELECTRONIC COPY

LG791616263 Report verification at igi.org



April 14, 2026 IGI Report Number LG791616263 Description LABORATORY GROWN DIAMOND Shape and Cutting Style PRINCESS CUT Measurements 11.29 X 11.01 X 7.38 MM

GRADING RESULTS Carat Weight 8.04 CARATS Color Grade F Clarity Grade VVS 2

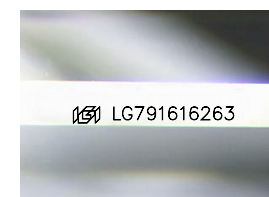


ADDITIONAL GRADING INFORMATION Polish EXCELLENT Symmetry EXCELLENT Fluorescence NONE Inscription(s) LG791616263 Comments: This Laboratory Grown Diamond was created by Chemical Vapor Deposition (CVD) growth process. Type IIa



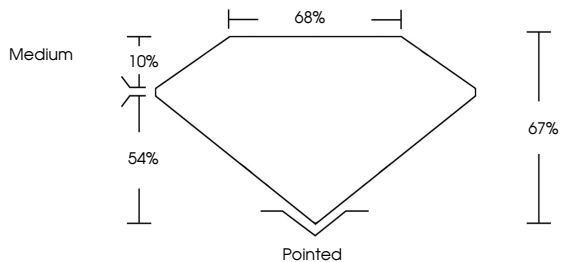
April 14, 2026 IGI Report No LG791616263 PRINCESS CUT 11.29 X 11.01 X 7.38 MM 8.04 CARATS F VVS 2 67% 54% Medium Pointed EXCELLENT EXCELLENT NONE LG791616263

Comments: This Laboratory Grown Diamond was created by Chemical Vapor Deposition (CVD) growth process. Type IIa

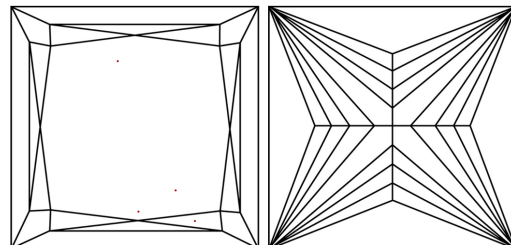


Sample Image Used

PROPORTIONS



CLARITY CHARACTERISTICS



KEY TO SYMBOLS Red symbols indicate internal characteristics. Green symbols indicate external characteristics.

Table with columns for color grades: D, E, F, G, H, I, J, Faint, Very Light, Light

Table with columns for clarity grades: FL, IF, VVS 1-2, VS 1-2, SI 1-2, I 1-3, Flawless, Internally Flawless, Very Very Slightly Included, Very Slightly Included, Slightly Included, Included

