



**ELECTRONIC COPY**

LG791625488  
Report verification at igi.org



April 20, 2026

IGI Report Number **LG791625488**

Description **LABORATORY GROWN DIAMOND**

Shape and Cutting Style **ROUND BRILLIANT**

Measurements **12.21 - 12.30 X 7.55 MM**

**GRADING RESULTS**

Carat Weight **7.01 CARATS**

Color Grade **F**

Clarity Grade **VVS 2**

Cut Grade **IDEAL**

April 20, 2026  
IGI Report Number **LG791625488**  
Description **LABORATORY GROWN DIAMOND**  
Shape and Cutting Style **ROUND BRILLIANT**  
Measurements **12.21 - 12.30 X 7.55 MM**

**GRADING RESULTS**

Carat Weight **7.01 CARATS**

Color Grade **F**

Clarity Grade **VVS 2**

Cut Grade **IDEAL**

**ADDITIONAL GRADING INFORMATION**

Polish **EXCELLENT**

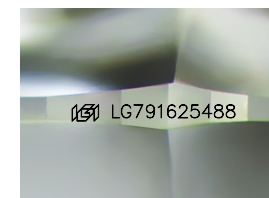
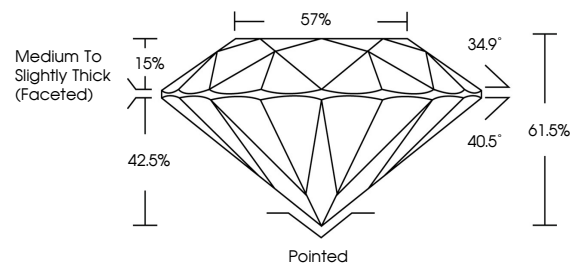
Symmetry **EXCELLENT**

Fluorescence **NONE**

Inscription(s) **IGI LG791625488**

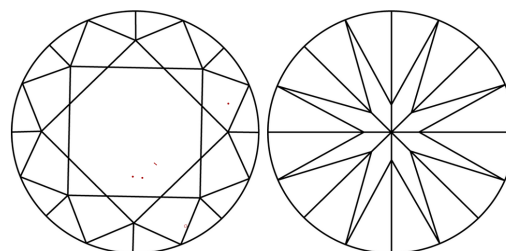
Comments: This Laboratory Grown Diamond was created by Chemical Vapor Deposition (CVD) growth process. Type IIa

**PROPORTIONS**



Sample Image Used

**CLARITY CHARACTERISTICS**



**KEY TO SYMBOLS**

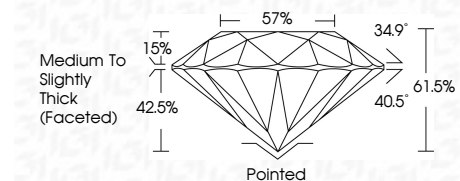
Red symbols indicate internal characteristics.  
Green symbols indicate external characteristics.

**COLOR**

D E F G H I J Faint Very Light Light

**CLARITY**

| FL       | IF                  | VVS <sup>1-2</sup>          | VS <sup>1-2</sup>      | SI <sup>1-2</sup> | I <sup>1-3</sup> |
|----------|---------------------|-----------------------------|------------------------|-------------------|------------------|
| Flawless | Internally Flawless | Very Very Slightly Included | Very Slightly Included | Slightly Included | Included         |



**ADDITIONAL GRADING INFORMATION**

Polish **EXCELLENT**

Symmetry **EXCELLENT**

Fluorescence **NONE**

Inscription(s) **IGI LG791625488**

Comments: This Laboratory Grown Diamond was created by Chemical Vapor Deposition (CVD) growth process. Type IIa



**IGI**



|                |                           |                 |                         |             |     |       |       |       |     |                                    |         |           |           |      |                 |
|----------------|---------------------------|-----------------|-------------------------|-------------|-----|-------|-------|-------|-----|------------------------------------|---------|-----------|-----------|------|-----------------|
| April 20, 2026 | IGI Report No LG791625488 | ROUND BRILLIANT | 12.21 - 12.30 X 7.55 MM | 7.01 CARATS | F   | VVS 2 | IDEAL | 61.5% | 57% | Medium To Slightly Thick (Faceted) | Pointed | EXCELLENT | EXCELLENT | NONE | IGI LG791625488 |
| IGI            | IGI                       | IGI             | IGI                     | IGI         | IGI | IGI   | IGI   | IGI   | IGI | IGI                                | IGI     | IGI       | IGI       | IGI  | IGI             |

Comments: This Laboratory Grown Diamond was created by Chemical Vapor Deposition (CVD) growth process. Type IIa