



ELECTRONIC COPY

LG791640871
Report verification at igi.org



April 18, 2026

IGI Report Number **LG791640871**

Description **LABORATORY GROWN DIAMOND**

Shape and Cutting Style **ROUND BRILLIANT**

Measurements **6.63 - 6.66 X 4.10 MM**

GRADING RESULTS

Carat Weight **1.10 CARAT**

Color Grade **D**

Clarity Grade **VVS 2**

Cut Grade **EXCELLENT**

April 18, 2026

IGI Report Number **LG791640871**

Description **LABORATORY GROWN DIAMOND**

Shape and Cutting Style **ROUND BRILLIANT**

Measurements **6.63 - 6.66 X 4.10 MM**

GRADING RESULTS

Carat Weight **1.10 CARAT**

Color Grade **D**

Clarity Grade **VVS 2**

Cut Grade **EXCELLENT**

ADDITIONAL GRADING INFORMATION

Polish **EXCELLENT**

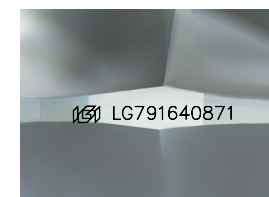
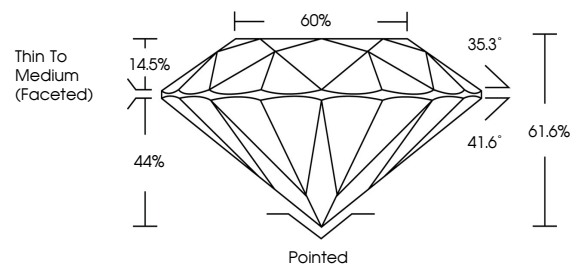
Symmetry **EXCELLENT**

Fluorescence **NONE**

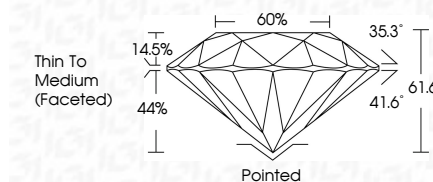
Inscription(s) **IGI LG791640871**

Comments: This Laboratory Grown Diamond was created by Chemical Vapor Deposition (CVD) growth process. Type IIa

PROPORTIONS



Sample Image Used



COLOR

D E F G H I J Faint Very Light Light

CLARITY

FL	IF	VVS ¹⁻²	VS ¹⁻²	SI ¹⁻²	I ¹⁻³
Flawless	Internally Flawless	Very Very Slightly Included	Very Slightly Included	Slightly Included	Included

ADDITIONAL GRADING INFORMATION

Polish **EXCELLENT**

Symmetry **EXCELLENT**

Fluorescence **NONE**

Inscription(s) **IGI LG791640871**

Comments: This Laboratory Grown Diamond was created by Chemical Vapor Deposition (CVD) growth process. Type IIa



IGI



April 18, 2026	IGI Report No LG791640871	1.10 CARAT	D
ROUND BRILLIANT	6.63 - 6.66 X 4.10 MM	EXCELLENT	VVS 2
Carat Weight	Color Grade	61.6%	66%
Clarity Grade	Cut Grade	Thin To Medium (Faceted)	Pointed
Depth	Table	60%	EXCELLENT
Girdle	Culet	EXCELLENT	EXCELLENT
Polish	Symmetry	EXCELLENT	EXCELLENT
Fluorescence	Inscriptions(s)	NONE	IGI LG791640871
Comments: This Laboratory Grown Diamond was created by Chemical Vapor Deposition (CVD) growth process. Type IIa			