



**INTERNATIONAL
GEMOLOGICAL
INSTITUTE**

ELECTRONIC COPY

LABORATORY GROWN DIAMOND REPORT

April 20, 2026
IGI Report Number **LG791642544**
Description **LABORATORY GROWN DIAMOND**
Shape and Cutting Style **HEART MODIFIED BRILLIANT**
Measurements **5.19 X 6.51 X 2.98 MM**

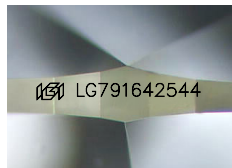
GRADING RESULTS

Carat Weight **0.74 CARAT**
Color Grade **FANCY VIVID PINK**
Clarity Grade **VVS 2**

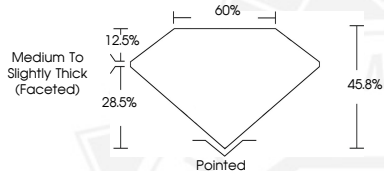
ADDITIONAL GRADING INFORMATION

Polish **GOOD**
Symmetry **VERY GOOD**
Fluorescence **SLIGHT**
Inscription(s) **IGI LG791642544**

Comments: This Laboratory Grown Diamond was created by Chemical Vapor Deposition (CVD) growth process. Indications of post-growth treatment.



Sample Image Used



April 20, 2026
IGI Report Number **LG791642544**
HEART MODIFIED BRILLIANT
LABORATORY GROWN DIAMOND
5.19 X 6.51 X 2.98 MM
Carat Weight **0.74 CARAT**
Color Grade **FANCY VIVID PINK**
Clarity Grade **VVS 2**
Polish **GOOD**
Symmetry **VERY GOOD**
Fluorescence **SLIGHT**
Inscription(s) **IGI LG791642544**

Comments: This Laboratory Grown Diamond was created by Chemical Vapor Deposition (CVD) growth process. Indications of post-growth treatment.



April 20, 2026
IGI Report Number **LG791642544**
HEART MODIFIED BRILLIANT
LABORATORY GROWN DIAMOND
5.19 X 6.51 X 2.98 MM
Carat Weight **0.74 CARAT**
Color Grade **FANCY VIVID PINK**
Clarity Grade **VVS 2**
Polish **GOOD**
Symmetry **VERY GOOD**
Fluorescence **SLIGHT**
Inscription(s) **IGI LG791642544**

Comments: This Laboratory Grown Diamond was created by Chemical Vapor Deposition (CVD) growth process. Indications of post-growth treatment.



THIS DOCUMENT WAS PRODUCED WITH THE FOLLOWING SECURITY MEASURES: SPECIAL DOCUMENT PAPER, INK SCREENS, WATERMARK, BACKGROUND DESIGNS, HOLOGRAM AND OTHER SECURITY FEATURES NOT LISTED AND DO EXCEED DOCUMENT SECURITY INDUSTRY GUIDELINES.

For terms & conditions and to verify this report, please visit www.igi.org