



**ELECTRONIC COPY**

LG791643936  
Report verification at igi.org



April 23, 2026

IGI Report Number **LG791643936**

Description **LABORATORY GROWN DIAMOND**

Shape and Cutting Style **OCTAGONAL STEP CUT**

Measurements **7.07 X 7.10 X 4.33 MM**

**GRADING RESULTS**

Carat Weight **1.54 CARAT**

Color Grade **FANCY INTENSE PINK**

Clarity Grade **VVS 2**

**LABORATORY GROWN DIAMOND REPORT**

April 23, 2026

IGI Report Number **LG791643936**

Description **LABORATORY GROWN DIAMOND**

Shape and Cutting Style **OCTAGONAL STEP CUT**

Measurements **7.07 X 7.10 X 4.33 MM**

**GRADING RESULTS**

Carat Weight **1.54 CARAT**

Color Grade **FANCY INTENSE PINK**

Clarity Grade **VVS 2**

**ADDITIONAL GRADING INFORMATION**

Polish **EXCELLENT**

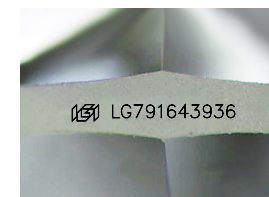
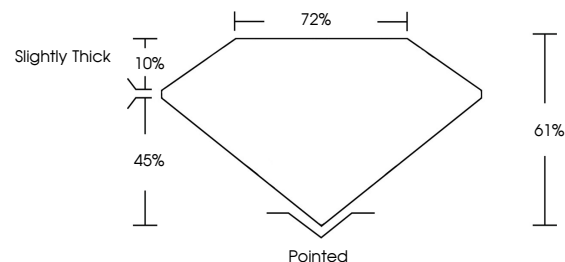
Symmetry **EXCELLENT**

Fluorescence **SLIGHT**

Inscription(s) **LG791643936**

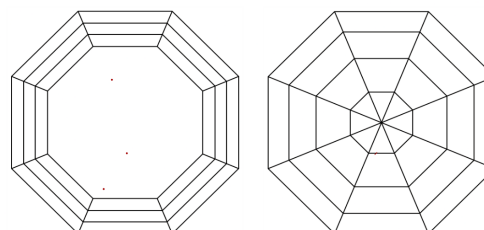
Comments: This Laboratory Grown Diamond was created by Chemical Vapor Deposition (CVD) growth process. Indications of post-growth treatment.

**PROPORTIONS**



Sample Image Used

**CLARITY CHARACTERISTICS**



**KEY TO SYMBOLS**

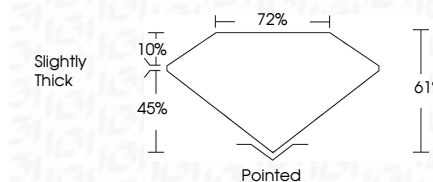
Red symbols indicate internal characteristics.  
Green symbols indicate external characteristics.

**COLOR**

D E F G H I J Faint Very Light Light

**CLARITY**

| FL       | IF                  | VVS <sup>1-2</sup>          | VS <sup>1-2</sup>      | SI <sup>1-2</sup> | I <sup>1-3</sup> |
|----------|---------------------|-----------------------------|------------------------|-------------------|------------------|
| Flawless | Internally Flawless | Very Very Slightly Included | Very Slightly Included | Slightly Included | Included         |



**ADDITIONAL GRADING INFORMATION**

Polish **EXCELLENT**

Symmetry **EXCELLENT**

Fluorescence **SLIGHT**

Inscription(s) **LG791643936**

Comments: This Laboratory Grown Diamond was created by Chemical Vapor Deposition (CVD) growth process. Indications of post-growth treatment.



**IGI**



April 23, 2026  
IGI Report No LG791643936  
OCTAGONAL STEP CUT  
7.07 X 7.10 X 4.33 MM  
1.54 CARAT  
FANCY INTENSE PINK  
VVS 2  
61%  
72%  
Slightly Thick  
Pointed  
EXCELLENT  
EXCELLENT  
SLIGHT  
IGI LG791643936

Comments: This Laboratory Grown Diamond was created by Chemical Vapor Deposition (CVD) growth process. Indications of post-growth treatment.