



ELECTRONIC COPY

LG791643938
Report verification at igi.org



April 23, 2026

IGI Report Number **LG791643938**

Description **LABORATORY GROWN DIAMOND**

Shape and Cutting Style **OCTAGONAL STEP CUT**

Measurements **5.93 X 6.14 X 3.77 MM**

GRADING RESULTS

Carat Weight **1.06 CARAT**

Color Grade **FANCY INTENSE PINK**

Clarity Grade **VS 2**

April 23, 2026
IGI Report Number **LG791643938**
Description **LABORATORY GROWN DIAMOND**
Shape and Cutting Style **OCTAGONAL STEP CUT**
Measurements **5.93 X 6.14 X 3.77 MM**

GRADING RESULTS

Carat Weight **1.06 CARAT**

Color Grade **FANCY INTENSE PINK**

Clarity Grade **VS 2**

ADDITIONAL GRADING INFORMATION

Polish **VERY GOOD**

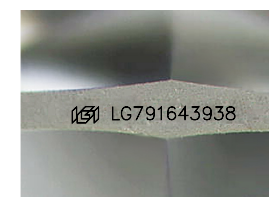
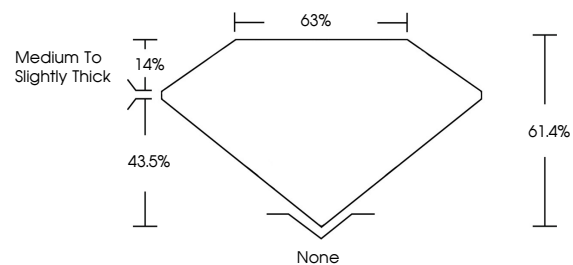
Symmetry **VERY GOOD**

Fluorescence **SLIGHT**

Inscription(s) **IGI LG791643938**

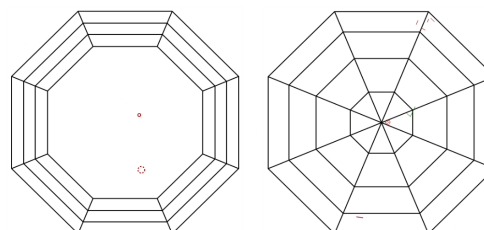
Comments: This Laboratory Grown Diamond was created by Chemical Vapor Deposition (CVD) growth process. Indications of post-growth treatment.

PROPORTIONS



Sample Image Used

CLARITY CHARACTERISTICS



KEY TO SYMBOLS

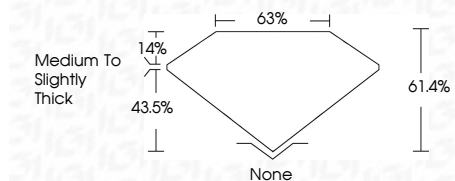
Red symbols indicate internal characteristics.
Green symbols indicate external characteristics.

COLOR

D E F G H I J Faint Very Light Light

CLARITY

FL	IF	VS ¹⁻²	VV ¹⁻²	SI ¹⁻²	I ¹⁻³
Flawless	Internally Flawless	Very Very Slightly Included	Very Slightly Included	Slightly Included	Included



ADDITIONAL GRADING INFORMATION

Polish **VERY GOOD**

Symmetry **VERY GOOD**

Fluorescence **SLIGHT**

Inscription(s) **IGI LG791643938**

Comments: This Laboratory Grown Diamond was created by Chemical Vapor Deposition (CVD) growth process. Indications of post-growth treatment.



April 23, 2026
IGI Report No LG791643938
OCTAGONAL STEP CUT
5.93 X 6.14 X 3.77 MM
1.06 CARAT
FANCY INTENSE PINK
VS 2
61.4%
63%
Medium to Slightly Thick
None
VERY GOOD
VERY GOOD
SLIGHT
IGI LG791643938
Comments: This Laboratory Grown Diamond was created by Chemical Vapor Deposition (CVD) growth process. Indications of post-growth treatment.