



ELECTRONIC COPY

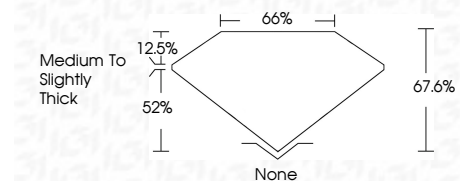
LG791644267
Report verification at igi.org



April 27, 2026
IGI Report Number **LG791644267**
Description **LABORATORY GROWN DIAMOND**
Shape and Cutting Style **CUT CORNERED
RECTANGULAR MODIFIED
BRILLIANT**
Measurements **8.91 X 6.26 X 4.23 MM**

GRADING RESULTS

Carat Weight **2.02 CARATS**
Color Grade **FANCY INTENSE PINK**
Clarity Grade **VS 2**



ADDITIONAL GRADING INFORMATION

Polish **VERY GOOD**
Symmetry **VERY GOOD**
Fluorescence **SLIGHT**
Inscription(s) **IGI LG791644267**
Comments: This Laboratory Grown Diamond was created by Chemical Vapor Deposition (CVD) growth process. Indications of post-growth treatment.



April 27, 2026
IGI Report No LG791644267
CUT CORNERED RECT. MODIFIED BRILLIANT
8.91 X 6.26 X 4.23 MM
2.02 CARATS
FANCY INTENSE PINK
VS 2
52%
65%
Medium to Slightly Thick
None
VERY GOOD
VERY GOOD
SLIGHT
IGI LG791644267
Comments: This Laboratory Grown Diamond was created by Chemical Vapor Deposition (CVD) growth process. Indications of post-growth treatment.

LABORATORY GROWN DIAMOND REPORT

April 27, 2026
IGI Report Number **LG791644267**
Description **LABORATORY GROWN DIAMOND**
Shape and Cutting Style **CUT CORNERED RECTANGULAR
MODIFIED BRILLIANT**
Measurements **8.91 X 6.26 X 4.23 MM**

GRADING RESULTS

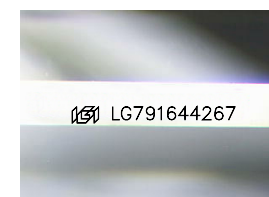
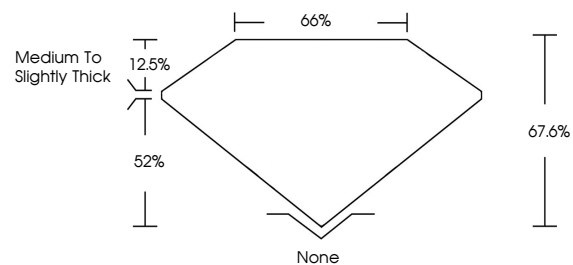
Carat Weight **2.02 CARATS**
Color Grade **FANCY INTENSE PINK**
Clarity Grade **VS 2**

ADDITIONAL GRADING INFORMATION

Polish **VERY GOOD**
Symmetry **VERY GOOD**
Fluorescence **SLIGHT**
Inscription(s) **IGI LG791644267**

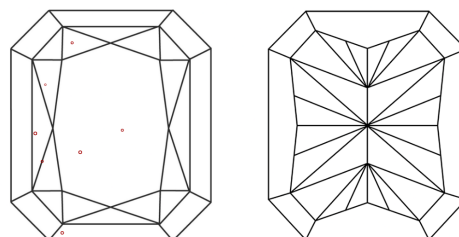
Comments: This Laboratory Grown Diamond was created by Chemical Vapor Deposition (CVD) growth process. Indications of post-growth treatment.

PROPORTIONS



Sample Image Used

CLARITY CHARACTERISTICS



KEY TO SYMBOLS

Red symbols indicate internal characteristics.
Green symbols indicate external characteristics.

COLOR

D E F G H I J Faint Very Light Light

CLARITY

FL	IF	VS ¹⁻²	VS ¹⁻²	SI ¹⁻²	I ¹⁻³
Flawless	Internally Flawless	Very Very Slightly Included	Very Slightly Included	Slightly Included	Included