



**ELECTRONIC COPY**

LG791644530  
Report verification at igi.org



April 28, 2026

IGI Report Number **LG791644530**

Description **LABORATORY GROWN DIAMOND**

Shape and Cutting Style **PRINCESS CUT**

Measurements **6.31 X 6.24 X 4.31 MM**

**GRADING RESULTS**

Carat Weight **1.55 CARAT**

Color Grade **G**

Clarity Grade **VS 2**

April 28, 2026  
IGI Report Number **LG791644530**  
Description **LABORATORY GROWN DIAMOND**  
Shape and Cutting Style **PRINCESS CUT**  
Measurements **6.31 X 6.24 X 4.31 MM**

**GRADING RESULTS**

Carat Weight **1.55 CARAT**

Color Grade **G**

Clarity Grade **VS 2**

**ADDITIONAL GRADING INFORMATION**

Polish **VERY GOOD**

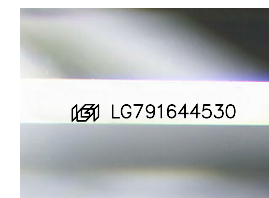
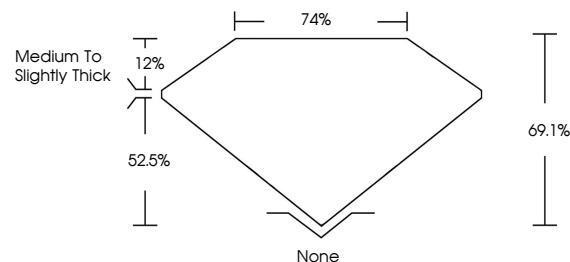
Symmetry **GOOD**

Fluorescence **NONE**

Inscription(s) **IGI LG791644530**

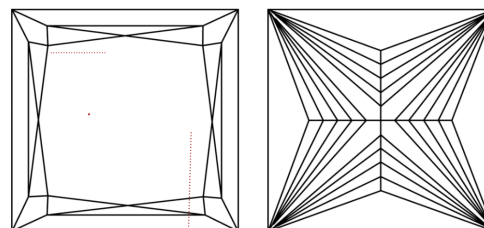
Comments: This Laboratory Grown Diamond was created by Chemical Vapor Deposition (CVD) growth process.  
Type IIa

**PROPORTIONS**



Sample Image Used

**CLARITY CHARACTERISTICS**



**KEY TO SYMBOLS**

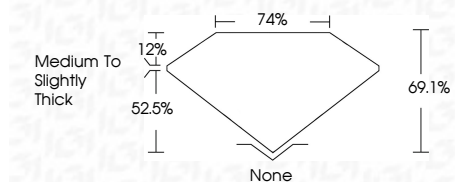
Red symbols indicate internal characteristics.  
Green symbols indicate external characteristics.

**COLOR**

D E F G H I J Faint Very Light Light

**CLARITY**

FL	IF	VS <sup>1-2</sup>	VS <sup>1-2</sup>	SI <sup>1-2</sup>	I <sup>1-3</sup>
Flawless	Internally Flawless	Very Very Slightly Included	Very Slightly Included	Slightly Included	Included



**ADDITIONAL GRADING INFORMATION**

Polish **VERY GOOD**

Symmetry **GOOD**

Fluorescence **NONE**

Inscription(s) **IGI LG791644530**

Comments: This Laboratory Grown Diamond was created by Chemical Vapor Deposition (CVD) growth process.  
Type IIa



**IGI**



April 28, 2026  
IGI Report No LG791644530  
PRINCESS CUT  
6.31 X 6.24 X 4.31 MM  
Carat Weight 1.55 CARAT  
Color Grade G  
Clarity Grade VS 2  
Depth 52.5%  
Table 12%  
Girdle Medium to Slightly Thick  
Culet None  
Polish VERY GOOD  
Symmetry GOOD  
Fluorescence NONE  
Inscription(s) IGI LG791644530  
Comments: This Laboratory Grown Diamond was created by Chemical Vapor Deposition (CVD) growth process.  
Type IIa