



**ELECTRONIC COPY**

LG791644777  
Report verification at igi.org



April 29, 2026

IGI Report Number **LG791644777**

Description **LABORATORY GROWN DIAMOND**

Shape and Cutting Style **EMERALD CUT**

Measurements **7.94 X 5.04 X 3.41 MM**

**GRADING RESULTS**

Carat Weight **1.38 CARAT**

Color Grade **FANCY VIVID PINK**

Clarity Grade **VS 1**

April 29, 2026  
IGI Report Number **LG791644777**  
Description **LABORATORY GROWN DIAMOND**  
Shape and Cutting Style **EMERALD CUT**  
Measurements **7.94 X 5.04 X 3.41 MM**

**GRADING RESULTS**

Carat Weight **1.38 CARAT**

Color Grade **FANCY VIVID PINK**

Clarity Grade **VS 1**

**ADDITIONAL GRADING INFORMATION**

Polish **EXCELLENT**

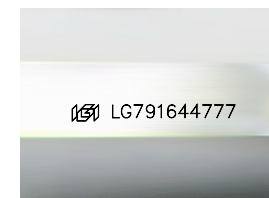
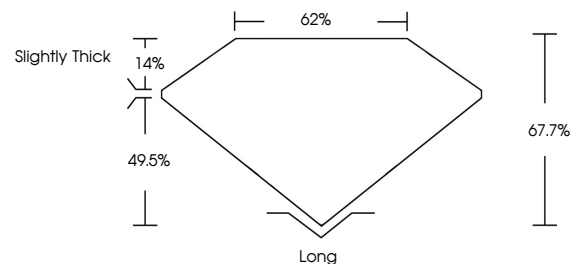
Symmetry **EXCELLENT**

Fluorescence **VERY SLIGHT**

Inscription(s) **IGI LG791644777**

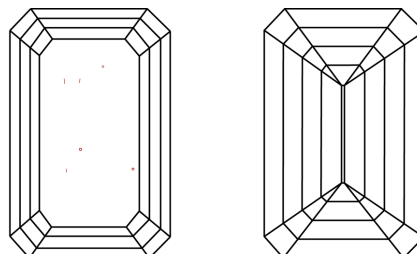
Comments: This Laboratory Grown Diamond was created by Chemical Vapor Deposition (CVD) growth process. Indications of post-growth treatment.

**PROPORTIONS**



Sample Image Used

**CLARITY CHARACTERISTICS**



**KEY TO SYMBOLS**

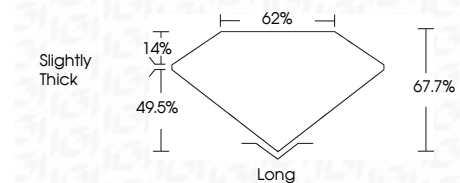
Red symbols indicate internal characteristics.  
Green symbols indicate external characteristics.

**COLOR**

D E F G H I J Faint Very Light Light

**CLARITY**

FL	IF	VS <sup>1-2</sup>	VS <sup>1-2</sup>	SI <sup>1-2</sup>	I <sup>1-3</sup>
Flawless	Internally Flawless	Very Very Slightly Included	Very Slightly Included	Slightly Included	Included



**ADDITIONAL GRADING INFORMATION**

Polish **EXCELLENT**

Symmetry **EXCELLENT**

Fluorescence **VERY SLIGHT**

Inscription(s) **IGI LG791644777**

Comments: This Laboratory Grown Diamond was created by Chemical Vapor Deposition (CVD) growth process. Indications of post-growth treatment.



**IGI**



April 29, 2026  
IGI Report No LG791644777  
EMERALD CUT

1.38 CARAT  
Carat Weight  
FANCY VIVID PINK  
Color Grade

VS 1  
Clarity Grade

67.7%  
Depth

62%  
Table

Slightly Thick  
Girdle

Long  
Culet  
EXCELLENT  
Polish

EXCELLENT  
Symmetry

VERY SLIGHT  
Fluorescence

IGI LG791644777  
Inscription(s)

Comments: This Laboratory Grown Diamond was created by Chemical Vapor Deposition (CVD) growth process. Indications of post-growth treatment.