



ELECTRONIC COPY

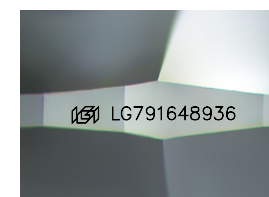
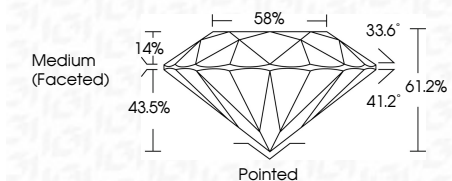
LG791648936 Report verification at igi.org



April 11, 2026 IGI Report Number LG791648936 Description LABORATORY GROWN DIAMOND Shape and Cutting Style ROUND BRILLIANT Measurements 8.15 - 8.18 X 5.00 MM

GRADING RESULTS

Carat Weight 2.03 CARATS Color Grade E Clarity Grade VVS 2 Cut Grade IDEAL



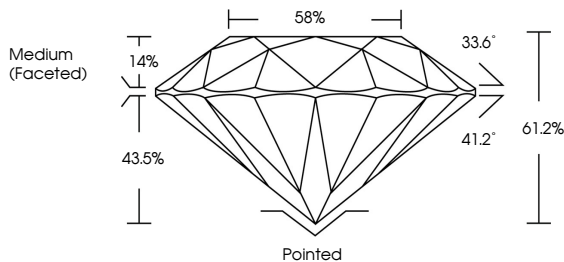
Sample Image Used

ADDITIONAL GRADING INFORMATION

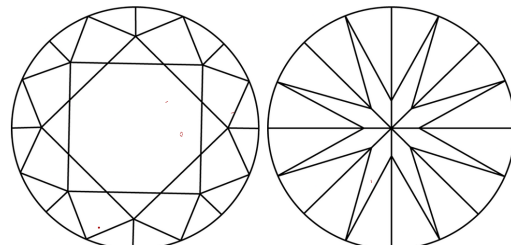
Polish EXCELLENT Symmetry EXCELLENT Fluorescence NONE Inscription(s) LG791648936 Comments: This Laboratory Grown Diamond was created by Chemical Vapor Deposition (CVD) growth process. Type IIa



PROPORTIONS



CLARITY CHARACTERISTICS



KEY TO SYMBOLS

Red symbols indicate internal characteristics. Green symbols indicate external characteristics.

COLOR

Table with color grades: D, E, F, G, H, I, J, Faint, Very Light, Light

CLARITY

Table with clarity grades: FL, IF, VVS 1-2, VS 1-2, SI 1-2, I 1-3, Flawless, Internally Flawless, Very Very Slightly Included, Very Slightly Included, Slightly Included, Included

LABORATORY GROWN DIAMOND REPORT

April 11, 2026 IGI Report Number LG791648936 Description LABORATORY GROWN DIAMOND Shape and Cutting Style ROUND BRILLIANT Measurements 8.15 - 8.18 X 5.00 MM

GRADING RESULTS

Carat Weight 2.03 CARATS Color Grade E Clarity Grade VVS 2 Cut Grade IDEAL

ADDITIONAL GRADING INFORMATION

Polish EXCELLENT Symmetry EXCELLENT Fluorescence NONE Inscription(s) LG791648936

Comments: This Laboratory Grown Diamond was created by Chemical Vapor Deposition (CVD) growth process. Type IIa

Certified SUSTAINABILITY RATED DIAMOND SCS GLOBAL SERVICES All certified diamonds come with an individual certificate, ONLY available at an accredited retailer



April 11, 2026 IGI Report No LG791648936 ROUND BRILLIANT 8.15 - 8.18 X 5.00 MM 2.03 CARATS E Color Grade VVS 2 IDEAL 61.2% 58% Medium (Faceted) Pointed EXCELLENT EXCELLENT NONE NONE LG791648936 Comments: This Laboratory Grown Diamond was created by Chemical Vapor Deposition (CVD) growth process. Type IIa