



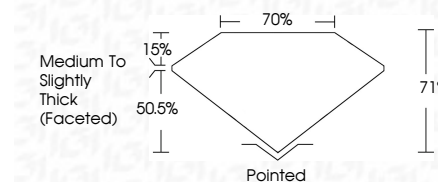
ELECTRONIC COPY

LG791649118  
Report verification at igi.org



April 16, 2026  
IGI Report Number **LG791649118**  
Description **LABORATORY GROWN DIAMOND**  
Shape and Cutting Style **OVAL MIXED CUT**  
Measurements **10.54 X 6.45 X 4.58 MM**

**GRADING RESULTS**  
Carat Weight **2.18 CARATS**  
Color Grade **E**  
Clarity Grade **VVS 2**



**ADDITIONAL GRADING INFORMATION**  
Polish **EXCELLENT**  
Symmetry **VERY GOOD**  
Fluorescence **NONE**  
Inscription(s) **IGI LG791649118**  
Comments: This Laboratory Grown Diamond was created by Chemical Vapor Deposition (CVD) growth process. Type IIa



April 16, 2026  
IGI Report No LG791649118  
OVAL MIXED CUT  
10.54 X 6.45 X 4.58 MM  
2.18 CARATS  
E  
VVS 2  
71%  
70%  
Medium to Slightly Thick (Faceted)  
Pointed  
EXCELLENT  
VERY GOOD  
NONE  
IGI LG791649118  
Comments: This Laboratory Grown Diamond was created by Chemical Vapor Deposition (CVD) growth process. Type IIa

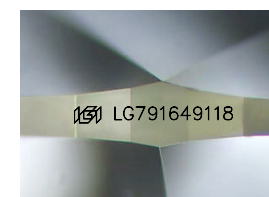
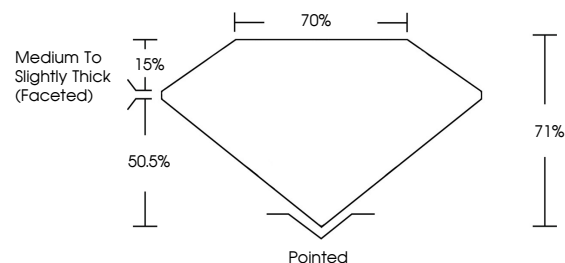
April 16, 2026  
IGI Report Number **LG791649118**  
Description **LABORATORY GROWN DIAMOND**  
Shape and Cutting Style **OVAL MIXED CUT**  
Measurements **10.54 X 6.45 X 4.58 MM**

**GRADING RESULTS**  
Carat Weight **2.18 CARATS**  
Color Grade **E**  
Clarity Grade **VVS 2**

**ADDITIONAL GRADING INFORMATION**  
Polish **EXCELLENT**  
Symmetry **VERY GOOD**  
Fluorescence **NONE**  
Inscription(s) **IGI LG791649118**

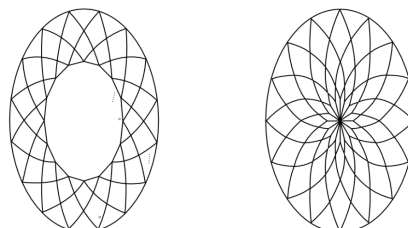
Comments: This Laboratory Grown Diamond was created by Chemical Vapor Deposition (CVD) growth process. Type IIa

PROPORTIONS



Sample Image Used

CLARITY CHARACTERISTICS



KEY TO SYMBOLS

Red symbols indicate internal characteristics.  
Green symbols indicate external characteristics.

COLOR

D E F G H I J Faint Very Light Light

CLARITY

FL IF VVS<sup>1-2</sup> VS<sup>1-2</sup> SI<sup>1-2</sup> I<sup>1-3</sup>  
Flawless Internally Flawless Very Very Slightly Included Very Slightly Included Slightly Included Included

