



ELECTRONIC COPY

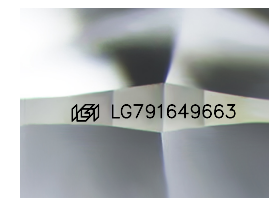
LG791649663
Report verification at igi.org



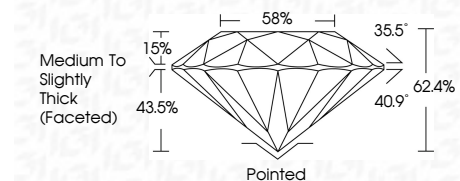
April 20, 2026
IGI Report Number LG791649663
Description LABORATORY GROWN DIAMOND
Shape and Cutting Style ROUND BRILLIANT
Measurements 6.42 - 6.47 X 4.02 MM

GRADING RESULTS

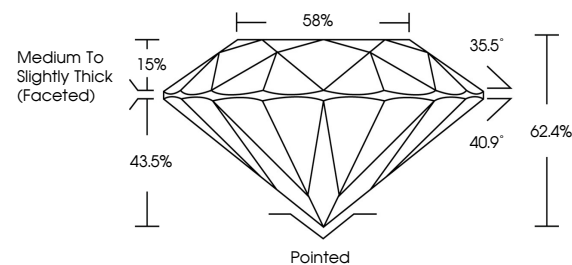
Carat Weight 1.03 CARAT
Color Grade D
Clarity Grade VVS 2
Cut Grade IDEAL



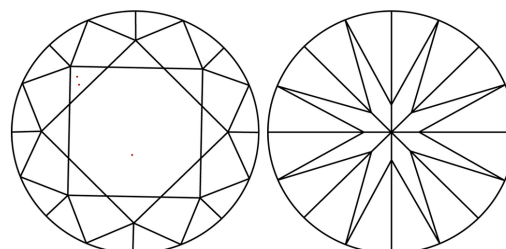
Sample Image Used



PROPORTIONS



CLARITY CHARACTERISTICS



KEY TO SYMBOLS

Red symbols indicate internal characteristics.
Green symbols indicate external characteristics.

COLOR

D E F G H I J Faint Very Light Light

CLARITY

FL IF VVS 1-2 VS 1-2 SI 1-2 I 1-3
Flawless Internally Flawless Very Very Slightly Included Very Slightly Included Slightly Included Included

ADDITIONAL GRADING INFORMATION

Polish EXCELLENT
Symmetry EXCELLENT
Fluorescence NONE
Inscription(s) IGI LG791649663
Comments: This Laboratory Grown Diamond was created by Chemical Vapor Deposition (CVD) growth process. Type IIa



April 20, 2026
IGI Report No LG791649663
ROUND BRILLIANT
6.42 - 6.47 X 4.02 MM
1.03 CARAT
Color Grade D
Clarity Grade VVS 2
Cut Grade IDEAL
Depth 62.4%
Table 58%
Medium To Slightly Thick (Faceted)
Pointed
Polish EXCELLENT
Symmetry EXCELLENT
Fluorescence NONE
Inscription(s) IGI LG791649663
Comments: This Laboratory Grown Diamond was created by Chemical Vapor Deposition (CVD) growth process. Type IIa